

# Anti- $\beta$ -Catenin (Tyr-86), phospho-specific

Quote# RUN111  
Host: Rabbit Polyclonal

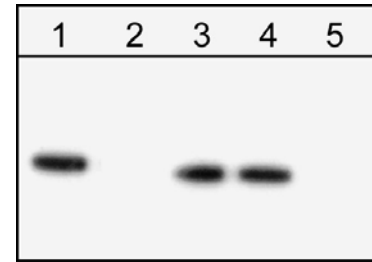
## Custom Service:

The custom rabbit polyclonal antibody service requested was production of antibodies that are specifically reactive to Tyr-86 of human  $\beta$ -catenin. Several articles discuss Tyr-86 phosphorylation:

Mol Cell Biol. (2003) Apr;23(7):2287-97  
Mol Cell Biol. (2003) Oct;23(20):7391-402  
J Biol Chem. (2005) Jun 3;280(22):21129-36.

**Samples:** Shipped 11/15/05

Description	Quantity	Concentration
Pur. Antibody #33333 (10/6/05)	4 X 150 $\mu$ l	1 mg/ml
Pur. Antibody #33334 (10/7/05)	4 X 250 $\mu$ l	1 mg/ml
Antiserum #33333 (8/4/05)	1 X 100 $\mu$ l	
Antiserum #33334 (8/4/05)	1 X 100 $\mu$ l	
Pre-immune Serum #33333	1 X 100 $\mu$ l	
Pre-immune Serum #33334	1 X 100 $\mu$ l	
Blocking Peptide (phospho- $\beta$ -catenin (Tyr-86))	1 X 500 $\mu$ l	1 mg/ml



$\beta$ -Catenin (Y86)

Western blot analysis of  $\beta$ -Catenin immunoprecipitated from lysates prepared from A431 cells treated with pervanadate. The immunoprecipitation was performed using mouse monoclonal anti- $\beta$ -Catenin. The blots were probed with anti-phospho- $\beta$ -Catenin (Tyr-86) custom antibody (33333 10/6/05). The immunoprecipitated  $\beta$ -Catenin was untreated (lane 1) or treated with alkaline phosphatase (lane 5) then probed with the antibody. In addition, this antibody was used in the presence of phospho- $\beta$ -Catenin (Tyr-86) peptide (lane 2), phospho- $\beta$ -Catenin (Tyr-654) peptide (lane 3), or BSA-coupled phosphotyrosine (lane 4).

## Immunogen:

Phospho- $\beta$ -Catenin (Tyr-86) synthetic peptide (coupled to KLH) corresponding to amino acid residues around tyrosine 86 of human  $\beta$ -Catenin. This peptide sequence is highly conserved in rat and mouse  $\beta$ -Catenin.

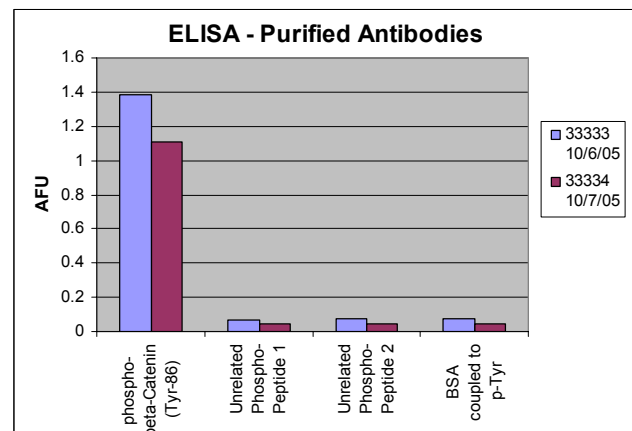
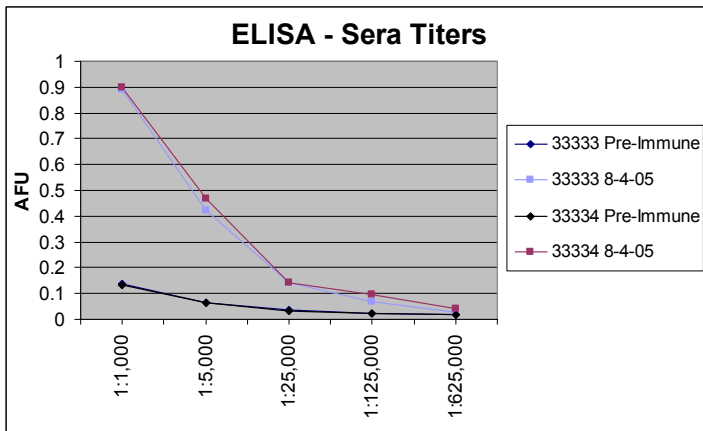
## Buffer and Storage:

Rabbit polyclonal, affinity-purified antibodies are supplied in phosphate-buffered saline with 0.05% sodium azide. Sera are provided with 0.05% sodium azide. Blocking peptide is supplied in phosphate-buffered saline with 0.05% sodium azide. Store all at  $-20^{\circ}\text{C}$ . Stable for at least 1 year.

## Specificity:

This antibody was cross-adsorbed to phospho-tyrosine coupled to agarose before affinity purification using phospho- $\beta$ -Catenin (Tyr-86) peptide (without carrier). The antibodies detect a 92kDa\* protein corresponding to the molecular mass of  $\beta$ -Catenin on SDS-PAGE immunoblots of A431 and Hct116 src transformed cells treated with pervanadate (1 mM for 30 min), but not in control cells.

\*All molecular weights (MW) are confirmed by comparison to Bio-Rad Rainbow Markers and to western blot mobilities of known proteins with similar MW.



FOR RESEARCH USE ONLY. NOT FOR DIAGNOSTIC OR THERAPEUTIC USE.

www.ecmbiosciences.com  
telephone: 859-879-2075  
toll-free: 1-800-859-8202  
tech: info@ecmbio.com

ECMBiosciences