

Paxillin (Tyr-31), phospho-specific Mouse Monoclonal IgG1

Cat. # PM1021

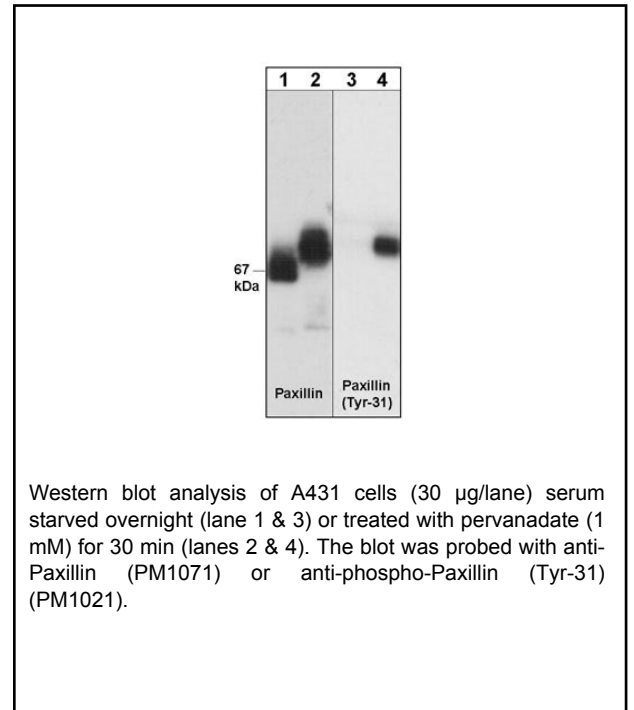
Size 100 µl

Background

Paxillin is involved in focal adhesion formation during cell adhesion and migration. Paxillin contains LD motifs, LIM domains, and an SH3- and SH2-binding domain that participate in a variety of protein-protein interactions with kinases, GTPase-activating proteins, and cytoskeletal proteins. Phosphorylation of paxillin occurs at both tyrosine and serine sites. Tyrosine phosphorylation of paxillin occurs in response to growth factors, neuropeptides, and integrins. The major sites of tyrosine phosphorylation include Tyr-31 and Tyr-118. Both of these sites may be involved in Crk binding to paxillin during integrin-mediated cell adhesion. These sites may provide docking motifs for recruitment of other signaling molecules to focal adhesions.

Background References

Salgia, R. et al. (1995) J Biol Chem. 270(49):29145.
Schaller, M.D & Schaefer, E.M. (2001) Biochem J. 360:57.



Applications

WB 1:1000
ELISA 1:2000

Species Reactivity

Hu, Rt, Ms

Specificity

This antibody detects a 72kDa* protein corresponding to the molecular mass of phosphorylated paxillin on SDS-PAGE immunoblots of pervanadate treated A431 cells, but not in A431 control cells.

End user should determine optimal dilution for their particular applications and experiments.
Western blot membranes were incubated with diluted antibody in 5% non-fat milk, PBS, 0.04% Tween20 for 1 hour at room temperature.

*All molecular weights (MW) are confirmed by comparison to Bio-Rad Rainbow Markers and to western blot mobilities of known proteins with similar MW.

Immunogen

Clone M102 was generated from phospho-Paxillin (Tyr-31) synthetic peptide (coupled to KLH) corresponding to amino acid residues around tyrosine 31 of human paxillin. This human sequence is highly conserved in rat and mouse paxillin.

Buffer and Storage

Mouse monoclonal antibody purified with protein A chromatography is supplied in 100µl phosphate-buffered saline, 50% glycerol, 1 mg/ml BSA, and 0.05% sodium azide. Store at -20°C. Stable for 1 year.

Related Products

PP1051 Paxillin (Ser-178), phospho-specific Rabbit Polyclonal
PM1071 Paxillin Mouse Monoclonal
AL9401 A431 Pervanadate Control Lysate
AL9501 A431 + Pervanadate Lysate
PK6070 Paxillin Phospho-Regulation Antibody Sampler Kit

Product References

Lee, S. et al. (2013) Biochim Biophys Acta. 1830(8):4017.
WB: rat C6 and human U373 gliomas
Zou, W. et al. (2012) J Bone Miner Res. 27(12):2490.
WB: mouse bone marrow macrophages

FOR RESEARCH USE ONLY. NOT FOR DIAGNOSTIC OR THERAPEUTIC USE.

www.ecmbiosciences.com
telephone: 859-879-2075
toll-free: 1-800-859-8202
info@ecmbiosciences.com

ECMBiosciences

Rev 1/17/2018