

Yes (N-terminal region)

Cat. # YM2501

Host Mouse Monoclonal IgG1

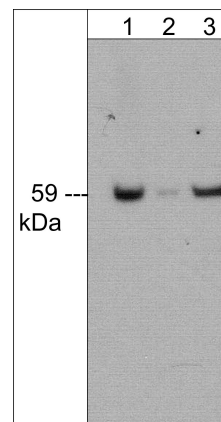
Size 100 µl

Background:

c-Src was the first proto-oncogenic non-receptor tyrosine kinase characterized in human. The Src family is composed of nine members in vertebrates, including c-Src, Yes, Fgr, Yrk, Fyn, Lyn, Hck, Lck, and Blk. Src-family kinases transduce signals that are involved in the control of a variety of cellular processes, including proliferation, differentiation, motility, and adhesion. Src-family kinases contain an N-terminal cell membrane anchor followed by SH3 and SH2 domains. The activity of Src family kinases is regulated by tyrosine phosphorylation at multiple sites. Phosphorylation of conserved N-terminal and central region tyrosine residues promotes activation, while phosphorylation of conserved C-terminal tyrosine residues downregulates Src kinase activity. Thus, tyrosine phosphorylation of Src kinases is critical for regulating their activity.

References

Stover, D.R. et al. (1996) J Biol Chem 271(21):12481.
Vadlamudi, R.K. et al. (2003) FEBS Letters 543:76.



Western blot analysis of human A431 (lane 1) and Jurkat (lane 2) cell lysates, as well as adult mouse brain tissue (lane 3). The Blot was probed with mouse monoclonal anti-Yes (N-terminal region) at 1:1000.

Immunogen:

Clone (M250) was generated from a recombinant protein containing amino acids in the N-terminal region of mouse Yes. This sequence has high homology to similar regions in rat and human Yes, but low homology to similar regions in other Src kinases.

Applications:

WB 1:1000
ELISA 1:2000

End user should determine optimal dilution for their particular applications and experiments. Western blot membranes were incubated with diluted antibody in 5% non-fat milk, PBS, 0.04% Tween20 for 1 hour at room temperature.

Related Products:

SM2591 c-Src (N-terminal region) Mouse Monoclonal
SM2611 c-Src (Tyr-530), phospho-specific [Conserved site] Mouse Monoclonal
SP1371 c-Src (Tyr-215), phospho-specific [Conserved site] Rabbit Polyclonal
CM2471 Csk (N-terminal region) Mouse Monoclonal
LM2541 Lck (N-terminal region) Mouse Monoclonal
FM2381 Fyn (N-terminal region) Mouse Monoclonal

Buffer and Storage:

Mouse monoclonal antibody purified with protein A chromatography is supplied in 100µl phosphate-buffered saline, 50% glycerol, 1 mg/ml BSA, and 0.05% sodium azide. Store at -20°C. Do not aliquot. Stable for 1 year.

Specificity:

The antibody detects a 59 kDa* protein corresponding to Yes on SDS-PAGE immunoblots of human A431 and Jurkat cells, as well as mouse brain. The antibody does not detect c-Src in mouse SYF cells transformed with c-Src.

*All molecular weights (MW) are confirmed by comparison to Bio-Rad Rainbow Markers and to western blot mobilities of known proteins with similar MW.

FOR RESEARCH USE ONLY. NOT FOR DIAGNOSTIC OR THERAPEUTIC USE.

www.ecmbiosciences.com
telephone: 859-879-2075
toll-free: 1-800-859-8202
tech: info@ecmbiosciences.com

ECMBiosciences

Rev 9/3/2008