

Anti-WASP / N-WASP

Cat. # **WP2101**
Host **Rabbit Polyclonal**
Size **100µl**

Background:

Members of the Wiskott-Aldrich syndrome protein (WASP) family regulate the formation of actin-based cell structures in many cell types. These proteins contain C-terminal actin-binding domains that can stimulate actin polymerization. In addition, these proteins bind the ARP2/3 complex, which can nucleate actin polymerization at sites that lead to branched actin structures. WASP is expressed primarily in hematopoietic cells, while its homolog N-WASP is widely expressed. These proteins have 48% identity in human with the highest homology in the functional regions of these proteins. Serine and tyrosine phosphorylation regulates the activity of both proteins. WASP is observed as a 63 kDa protein in hematopoietic cells, while N-WASP is observed as a 65 kDa in many tissues, especially brain.

References:

Cory, G.O. et al. (2003) Mol Cell. 11(5):1229-39.
Higgs, H.N. & Pollard, T.D. (2001) Annu Rev Biochem 70:649-676.

Immunogen:

A synthetic peptide (coupled to KLH) corresponding to a region near the C-terminus of human WASP. This sequence is highly homologous with a similar region in human N-WASP.

Buffer and Storage:

Rabbit polyclonal, affinity-purified antibody is supplied in 100µl phosphate-buffered saline, 50% glycerol, 1 mg/ml BSA, and 0.05% sodium azide. Store at -20°C. Do not aliquot. Stable for 1 year.

Applications:

Western blotting 1:1000 dilution[†]
ELISA 1:2000 dilution

End user should determine optimal dilution for their particular applications and experiments.

[†]Membrane was incubated with diluted antibody in 5% non-fat milk, PBS, 0.04% Tween20 for 1 hour at room temperature.

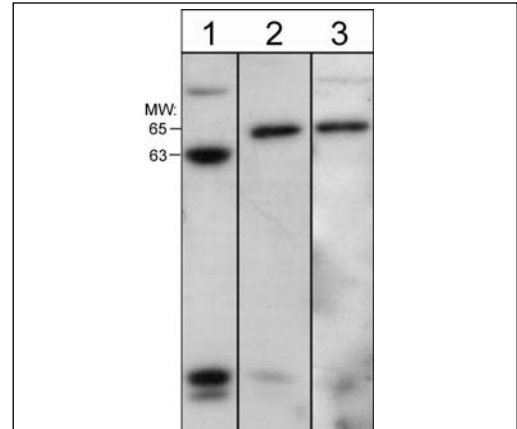
Specificity:

This antibody detects a 63 kDa* protein corresponding to the molecular mass of WASP on SDS-PAGE immunoblots of Jurkat cell lysate. In rat brain, A431, and SKN-SH cells, this antibody detects a 65 kDa* protein corresponding to the molecular mass of N-WASP.

*All molecular weights (MW) are confirmed by comparison to Bio-Rad Rainbow Markers and to western blot mobilities of known proteins with similar MW.

Related Products:

WP2401 unphosphorylated N-WASP (S484/S485) (WASP (S483/S484)) Rabbit Polyclonal
WP2201 N-WASP (S484/S485) (WASP (S483/S484)), phospho-specific Rabbit Polyclonal
WP2601 N-WASP (Tyr-256), phospho-specific Rabbit Polyclonal
WP2001 N-WASP Rabbit Polyclonal WX2005 N-WASP Peptide



Western blot analysis of Jurkat (lane 1), A431 (lane 2), and HeLa (lane 3) cell lysates (20 µg/lane). Blots were probed with rabbit polyclonal anti-WASP/N-WASP (WP2101).

FOR RESEARCH USE ONLY. NOT FOR DIAGNOSTIC OR THERAPEUTIC USE.

www.ecmbiosciences.com
telephone: 859-879-2075
toll-free: 1-800-859-8202
tech: info@ecmbio.com

ECMBiosciences