

VEGFR-2 (Tyr-801), phospho-specific [Conserved site]

Cat. # VP2921

Host Rabbit Polyclonal

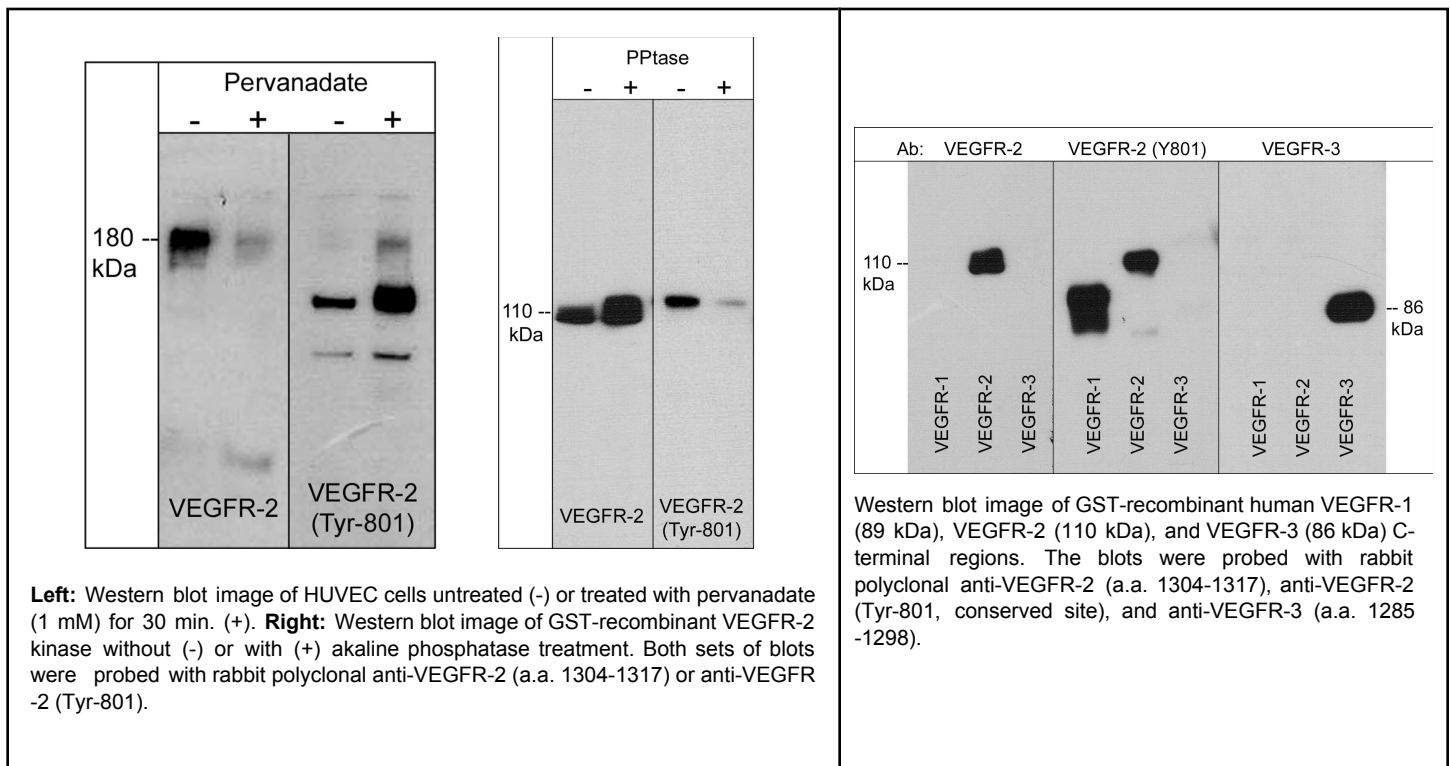
Size 100 µl

Background:

Vascular endothelial growth factor receptor-2 (VEGFR-2/Fik-1/KDR) is the primary receptor for VEGF in endothelial cells. Other VEGFR family members, VEGFR-1 (Flt-1) and VEGFR-3 (Flt-4), can also transduce the intracellular signals of VEGF. However, the role of VEGFR-1 is observed mainly during embryonic angiogenesis and VEGFR-3 signaling may be restricted to specific types of endothelial cells. Major autophosphorylation sites of VEGFR-2 are located in the kinase insert domain (Tyr-951/996) and in the tyrosine kinase catalytic domain (Tyr-1054/1059). Other sites, Tyr-1175 and Tyr-1212 provide docking sites for downstream signaling molecules. Activation of VEGFR-2 also phosphorylates Tyr-801, leading to PI3-kinase-Akt activation and increases in endothelial nitric oxide synthase activity. Phosphorylation of multiple sites in VEGFR-2 is required for downstream activation of several signaling pathways that control proliferation, chemotaxis, and sprouting during angiogenesis.

References

- Dougher-Vermazen, M. et al. (1994) *Biochem. Biophys. Res. Commun.* 205:728.
 Meyer, M. et al. (1999) *EMBO J.* 18:363.
 Robinson, C.J. & Stringer, S.E. (2001) *J. Cell Sci.* 114:853.
 Garcia Blanes, M. et al. (2007) *J Biol. Chem.* 282(14):10660.
 Kiselyov, A. et al. (2007) *Expert Opin. Investig. Drugs* 16(1):83.



FOR RESEARCH USE ONLY. NOT FOR DIAGNOSTIC OR THERAPEUTIC USE.

web: www.ecmbiosciences.com

telephone: 859-879-2075

email: info@ecmbiosciences.com

toll-free: 1-800-859-8202

VEGFR-2 (Tyr-801), phospho-specific [Conserved site]

Cat. # VP2921
Host Rabbit Polyclonal
Size 100 µl

Immunogen:

Phospho-VEGFR-2 (Tyr-801) peptide (coupled to carrier protein) corresponding to amino acids surrounding Tyr-801 in human VEGFR-2. This sequence has high homology to the conserved site in rat and mouse VEGFR-2, and has significant homology to the conserved sites in VEGFR-1 (Tyr-794) and VEGFR-3 (Tyr-812).

Buffer and Storage:

Rabbit polyclonal, affinity-purified antibody is supplied in 100 µl phosphate-buffered saline, 50% glycerol, 1 mg/ml BSA, and 0.05% sodium azide. Store at -20°C. Do not aliquot. Stable for 1 year.

Applications:

WB 1:1000
ELISA 1:2000
ICC 1:100

End user should determine optimal dilution for their particular applications and experiments.
Western blot membranes were incubated with diluted antibody in 5% non-fat milk, PBS, 0.04% Tween20 for 1 hour at room temperature.

Specificity:

This antibody was affinity purified with phospho-VEGFR-2 (Tyr-801) peptide. The purified antibody detects a 180 kDa* band corresponding to VEGFR-2 in western blots of human endothelial cells treated with pervanadate, and shows strong reactivity toward recombinant human VEGFR-2. This reactivity is removed by alkaline phosphatase treatment. In addition, the antibody detects the conserved site in VEGFR-1 (Tyr-794).

*All molecular weights (MW) are confirmed by comparison to Bio-Rad Rainbow Markers and to western blot mobilities of known proteins with similar MW.

Related Products:

VP2871 VEGFR-2 (a.a.1304-1317) Rabbit Polyclonal
VP2941 VEGFR-3 (a.a.1285-1298) Rabbit Polyclonal
EM1991 EGFR (Tyr-1101), phospho-specific Mouse Monoclonal
EP1871 EGFR (a.a. 961-972) Rabbit Polyclonal
EP1911 EGFR (Ser-967), phospho-specific Rabbit Polyclonal
EP1931 EGFR (Ser-1142), phospho-specific Rabbit Polyclonal

FOR RESEARCH USE ONLY. NOT FOR DIAGNOSTIC OR THERAPEUTIC USE.

web: www.ecmbiosciences.com

telephone: 859-879-2075

email: info@ecmbiosciences.com

toll-free: 1-800-859-8202

ECMBiosciences