

# phospho-c-Src (Tyr-215) Blocking Peptide

Cat. # **SX1375**

Size **50 µg**

## **Background:**

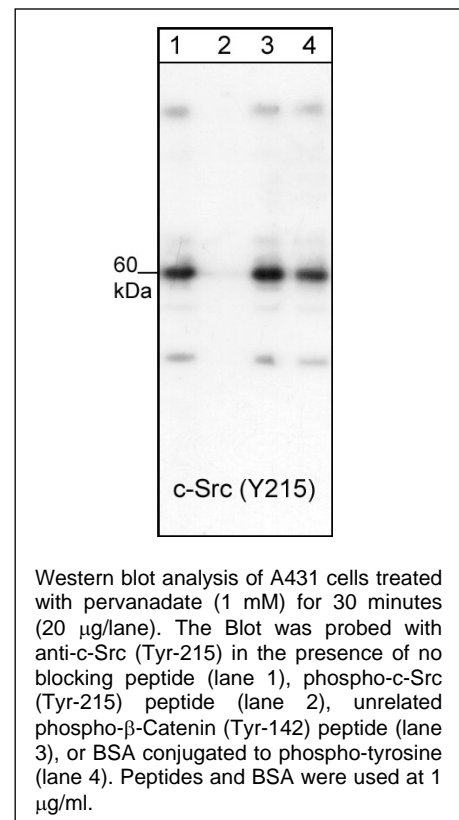
c-Src was the first proto-oncogenic non-receptor tyrosine kinase characterized in human. The Src family is composed of nine members in vertebrates, including c-Src, Yes, Fgr, Yrk, Fyn, Lyn, Hck, Lck, and Blk. Src-family kinases transduce signals that are involved in the control of a variety of cellular processes, including proliferation, differentiation, motility, and adhesion. Src-family kinases contain an amino terminal cell membrane anchor followed by an SH3 domain and an SH2 domain. The activity of c-Src is regulated by tyrosine phosphorylation at multiple sites. Tyrosine 418 is autophosphorylated following c-Src activation. Tyrosine 215 in the SH-2 domain of c-Src is phosphorylated following growth factor receptor activation. Both Tyr-215 and Tyr-418 phosphorylation increases tyrosine kinase activity, while phosphorylation of Tyr-529 downregulates c-Src kinase activity. Thus, tyrosine phosphorylation of c-Src is critical for regulating its kinase activity.

## **References:**

Stover, D.R. et al. (1996) J Biol Chem 271(21):12481.  
Vadlamudi, R.K. et al. (2003) FEBS Letters 543:76.

## **Peptide Sequence:**

Phospho-c-Src (Tyr-215) synthetic peptide corresponds to amino acid residues around tyrosine 215 of human c-Src. This peptide sequence has homology to other Src kinase family members, such as hck, fyn, csk, and yes.



## **Buffer and Storage:**

Blocking Peptide is supplied in 50µl phosphate-buffered saline and 0.05% sodium azide. Store at -20°C. Stable for 1 year.

## **Applications:**

Antibody Blocking 1 µg/ml<sup>1</sup>  
ELISA 10-100 ng/well<sup>2</sup>

End user should determine optimal concentration dependent on the concentration of the antibody.

<sup>1</sup>Recommended for blocking antibody reactivity in Western blot and immunocytochemistry.

<sup>2</sup>Established in 96-well Nunc immunoplates where peptide was bound to plates for 2 hrs in 0.1 M sodium carbonate buffer, pH 8.5.

## **Specificity:**

The peptide is specifically recognized by anti-c-Src (Tyr-215) phospho-specific antibody (SP1371) in ELISA, and has been shown to block the reactivity of SP1371 during Western blot. In addition, the peptide is recommended for use in blocking SP1371 reactivity in immunocytochemistry.

## **Related Products:**

SP1371 c-Src (Tyr-215), phospho-specific Rabbit Polyclonal

**FOR RESEARCH USE ONLY. NOT FOR DIAGNOSTIC OR THERAPEUTIC USE.**

www.ecmbiosciences.com  
telephone: 859-879-2075  
toll-free: 1-800-859-8202  
tech: info@ecmbiosciences.com

**ECM**Biosciences

Rev 10/06