

# SCAI (N-terminal region)

Cat. # SP3841

Host Rabbit Polyclonal

Size 100 µl

## Background:

Cellular processes such as proliferation, differentiation, and cell migration are directed through the highly regulated control of transcriptional cofactors. During cell migration, serum response factor (SRF) is a central transcription factor that interacts with MAL to induce gene expression in response to actin assembly changes caused by the RhoA-mDia1 pathway. SCAI (suppressor of cancer cell invasion) is a highly conserved protein that is thought to regulate invasive cell migration and act on the RhoA-mDia1 signal transduction pathway. SCAI localizes in the nucleus, where it is thought to bind and inhibit MAL, by forming a ternary complex with SRF. Suppression of SCAI expression has been shown to upregulate  $\beta$ 1-integrin expression, an integrin that is also upregulated in several human malignancies. In addition, SCAI is downregulated in various human tumors, and decreased levels of SCAI correlate with increased invasive cell migration. Thus, SCAI is a transcriptional cofactor that may be important for regulating gene expression downstream of mDia1 to direct changes in cell motility.

## References

Brandt, D.T. et al. (2009) Nat Cell Biol. 11(5):557.

## Immunogen:

SCAI synthetic peptide (coupled to KLH) corresponding to amino acid residues in the N-terminal region of mouse SCAI. This peptide sequence is highly conserved in human, rat, mouse, and chicken SCAI.

## Applications:

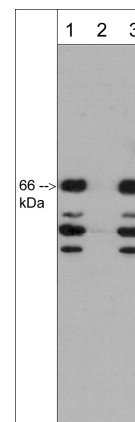
WB 1:1000  
ELISA 1:2000

End user should determine optimal dilution for their particular applications and experiments. Western blot membranes were incubated with diluted antibody in 5% non-fat milk, PBS, 0.04% Tween20 for 1 hour at room temperature.

## Related Products:

SX3845 SCAI (N-terminal region) Peptide  
RP1361 RhoA (Ser-188), phospho-specific Rabbit Polyclonal  
RP1501 Rho (Central Region) Rabbit Polyclonal  
DP3491 mDia2 (C-terminal region) Rabbit Polyclonal  
RS3251 Mouse Anti-Rabbit Ig Light-Chain Specific:HRP Mouse Monoclonal  
MS3001 Donkey Anti-Mouse Ig:HRP

FOR RESEARCH USE ONLY. NOT FOR DIAGNOSTIC OR THERAPEUTIC USE.



Western blot analysis of adult mouse brain. The blot was probed with rabbit polyclonal anti-SCAI (N-terminal region) antibody in the presence (lanes 2) or absence (lane 1) of SCAI (N-terminal region) blocking peptide (SX3845), or unrelated peptide (lane 3).

## Buffer and Storage:

Rabbit polyclonal, affinity-purified antibody is supplied in 100µl phosphate-buffered saline, 50% glycerol, 1 mg/ml BSA, and 0.05% sodium azide. Store at  $-20^{\circ}\text{C}$ . Do not aliquot. Stable for 1 year.

## Specificity:

This antibody was affinity purified using SCAI (N-terminal region) peptide (without carrier). The antibody detects a significant 66 kDa\* protein corresponding to the molecular mass of SCAI on SDS-PAGE immunoblots of mouse brain and human A431 cells. In brain, the antibody also detects 53 and 41 kDa bands.

\*All molecular weights (MW) are confirmed by comparison to Bio-Rad Rainbow Markers and to western blot mobilities of known proteins with similar MW.

web: [www.ecmbiosciences.com](http://www.ecmbiosciences.com)

telephone: 859-879-2075

email: [info@ecmbiosciences.com](mailto:info@ecmbiosciences.com)

toll-free: 1-800-859-8202

**ECM**Biosciences