

c-Src (Tyr-418), phospho-specific [Conserved site]

Cat. # SM3761

Host Mouse Monoclonal IgG1

Size 100 µl

Background:

c-Src was the first proto-oncogenic non-receptor tyrosine kinase characterized in human. The Src family is composed of nine members in vertebrates, including c-Src, Yes, Fgr, Yrk, Fyn, Lyn, Hck, Lck, and Blk. Src-family kinases transduce signals that are involved in the control of a variety of cellular processes, including proliferation, differentiation, motility, and adhesion. Src-family kinases contain an N-terminal cell membrane anchor followed by SH3 and SH2 domains. The activity of c-Src is regulated by tyrosine phosphorylation at multiple sites. Tyrosine 418 is autophosphorylated following c-Src activation. Tyrosine 215 in the SH2 domain of c-Src is phosphorylated following growth factor receptor activation. Both Tyr-215 and Tyr-418 phosphorylation increases tyrosine kinase activity, while phosphorylation of Tyr-530 downregulates c-Src kinase activity. Thus, tyrosine phosphorylation of c-Src is critical for regulating its kinase activity.

References

Stover, D.R. et al. (1996) J Biol Chem 271(21):12481.
Vadlamudi, R.K. et al. (2003) FEBS Letters 543:76.

Immunogen:

Clone (9A6) was generated from a phosphopeptide containing amino acid surrounding Tyr-418 in avian c-Src. This sequence has high homology to the conserved site in human, rat, and mouse c-Src, and the autophosphorylation site is well conserved in all Src family members.

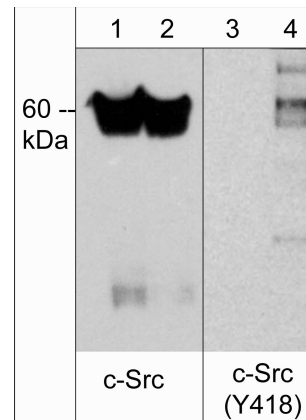
Applications:

WB 1:1000
ELISA 1:2000
IP 1:100

End user should determine optimal dilution for their particular applications and experiments. Western blot membranes were incubated with diluted antibody in 5% non-fat milk, PBS, 0.04% Tween20 for 1 hour at room temperature.

Related Products:

SM2591 c-Src (N-terminal region) Mouse Monoclonal
SM2611 c-Src (Tyr-530), phospho-specific [Conserved site] Mouse Monoclonal
SP1371 c-Src (Tyr-215), phospho-specific [Conserved site] Rabbit Polyclonal
SK6350 c-Src Phospho-Regulation Antibody Sampler Kit



Western blot analysis of mouse SYF cells transformed with c-Src. The cells were untreated (lanes 1 & 3) or treated with pervanadate (1 mM) for 30 minutes (lanes 2 & 4). The blot was probed with anti-c-Src (N-terminal region) (lanes 1 & 2), and anti-c-Src (Tyr-418) (lanes 3 & 4).

Buffer and Storage:

Mouse monoclonal antibody purified with protein A chromatography is supplied in 100µl phosphate-buffered saline, 50% glycerol, 1 mg/ml BSA, and 0.05% sodium azide. Store at -20°C. Do not aliquot. Stable for 1 year.

Specificity:

This antibody detects a 60 kDa* protein corresponding to c-Src on SDS-PAGE immunoblots of mouse SYF cells transformed with c-Src and treated with pervanadate.

*All molecular weights (MW) are confirmed by comparison to Bio-Rad Rainbow Markers and to western blot mobilities of known proteins with similar MW.

FOR RESEARCH USE ONLY. NOT FOR DIAGNOSTIC OR THERAPEUTIC USE.

web: www.ecmbiosciences.com

telephone: 859-879-2075

email: info@ecmbiosciences.com

toll-free: 1-800-859-8202

ECMBiosciences