

Semaphorin-4D (C-terminal Region)

Cat. # SM1881

Host Mouse Monoclonal IgG1

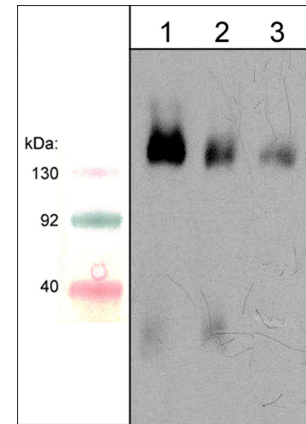
Size 100 µl

Background:

Plexins are a family of large integral membrane proteins that complex with neuropilins to form semaphorin co-receptors. The extracellular region of plexins contains a semaphorin domain, multiple glycine-rich motifs, and MET-related sequences. The cytoplasmic region contains a Sex/Plexin domain and putative tyrosine phosphorylation sites that mediate signal transduction after activation. In addition, Plexin B1 and B2 contain cleavage sites for subtilisin-like proprotein convertases. These cleavage sites may be important for regulating assembly of heterodimeric receptors or release of the extracellular domain. Plexin-B1 is expressed as a 300 kDa precursor protein that can be cleaved into a 200 kDa α -subunit and 100 kDa β -subunit. This plexin is the receptor for the class IV semaphorin, Sema-4D. Sema-4D activation of Plexin B1 recruits and activates c-Met, which can promote cell survival, migration, and angiogenesis.

References

- Tamagnone, L. et al. (1999) Cell 99:71.
Artigiani, S. et al. (2003) J Biol. Chem. 278(12):10094.
Basile, J.R. et al. (2006) PNAS 103(24):9017.



Western blot image of mouse brain lysate. The blot was probed with anti-Semaphorin-4D at 1:250 (lane 1), 1:500 (lane 2), and 1:1000 (lane 3).

Immunogen:

Clone (M188) was generated from a recombinant protein corresponding to the C-terminal region of human Semaphorin-4D.

Buffer and Storage:

Mouse monoclonal, protein G purified antibody is supplied in 100µl phosphate-buffered saline, 50% glycerol, 1 mg/ml BSA, and 0.05% sodium azide. Store at -20°C. Do not aliquot. Stable for 1 year.

Applications:

WB 1:1000
ELISA 1:2000

Specificity:

This antibody detects a 150 kDa* band on SDS-PAGE immunoblots of adult mouse brain.

*All molecular weights (MW) are confirmed by comparison to Bio-Rad Rainbow Markers and to western blot mobilities of known proteins with similar MW.

End user should determine optimal dilution for their particular applications and experiments. Western blot membranes were incubated with diluted antibody in 5% non-fat milk, PBS, 0.04% Tween20 for 1 hour at room temperature.

Related Products:

- PP1841 Plexin B1 (C-terminal Region) Rabbit Polyclonal
PP1301 Plexin A1 (Sema Domain) Rabbit Polyclonal
PP1471 Plexin A1 (Sema Domain) Rabbit Polyclonal
SP1221 Semaphorin-3A (Central Region) Rabbit Polyclonal
SP1241 Semaphorin-3A (C-terminal) Rabbit Polyclonal
SP1401 Semaphorin-3A (N-terminal) Rabbit Polyclonal

FOR RESEARCH USE ONLY. NOT FOR DIAGNOSTIC OR THERAPEUTIC USE.

www.ecmbiosciences.com
telephone: 859-879-2075
toll-free: 1-800-859-8202
tech: info@ecmbiosciences.com

ECMBiosciences

Rev 1/24/2008