

c-Src Phospho-Regulation Antibody Sampler Kit

Catalog # **SK6350**

Kit Summary:

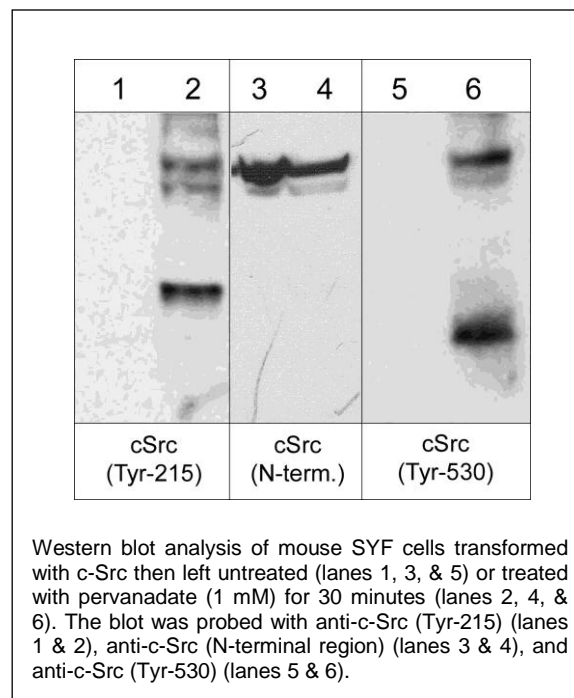
The c-Src phospho-regulation antibody sampler kit can be used to detect c-Src phosphorylation on Tyr-215, Tyr-418, and Tyr-530. The kit also includes a monoclonal antibody to monitor total c-Src expression levels and secondary reagents for detection of these antibodies.

Background:

c-Src was the first proto-oncogenic non-receptor tyrosine kinase characterized in human. The Src family is composed of nine members in vertebrates, including c-Src, Yes, Fgr, Yrk, Fyn, Lyn, Hck, Lck, and Blk. Src-family kinases transduce signals that are involved in the control of a variety of cellular processes, including proliferation, differentiation, motility, and adhesion. Src-family kinases contain an N-terminal cell membrane anchor followed by SH3 and SH2 domains. The activity of c-Src is regulated by tyrosine phosphorylation at multiple sites. Tyrosine 418 is autophosphorylated following c-Src activation. Tyrosine 215 in the SH2 domain of c-Src is phosphorylated following growth factor receptor activation. Both Tyr-215 and Tyr-418 phosphorylation increases tyrosine kinase activity, while phosphorylation of Tyr-530 downregulates c-Src kinase activity. Thus, tyrosine phosphorylation of c-Src is critical for regulating its kinase activity.

References:

Stover, D.R. et al. (1996) J Biol Chem 271(21):12481.
Vadlamudi, R.K. et al. (2003) FEBS Letters 543:76.



Kit Components:

Catalog#	Description	Host	Size	Applications	Species Reactivity	MW (kDa)
SM3761	c-Src (Tyr-418), phospho-specific [Conserved site]	Mouse mAb	50 µl	WB, E, IP	H, R, M	60
SP1371	c-Src (Tyr-215), phospho-specific [Conserved site]	Rabbit pAb	50 µl	WB, E	H, R, M	60
SM2611	c-Src (Tyr-530), phospho-specific [Conserved site]	Mouse mAb	50 µl	WB, E	H, R, M	60
SM2591	c-Src (N-terminal region)	Mouse mAb	50 µl	WB, E, IP	H, R, M	60
MS3001	Anti-Mouse Ig:HRP	Donkey pAb	100 µl	WB, E		
RS3251	Anti-Rabbit Ig Light-Chain Specific:HRP	Mouse mAb	100 µl	WB, E		

Applications: WB = western blot, E = ELISA, IP = immunoprecipitation. Species: H = Human, R = Rat, M = Mouse

Buffers and Storage:

Rabbit polyclonal and mouse monoclonal affinity-purified antibodies are supplied in phosphate-buffered saline, 50% glycerol, 1 mg/ml BSA, and 0.05% sodium azide. Store at -20°C . Stable for 1 year.

Secondary reagents are supplied in phosphate-buffered saline, 50% glycerol, and 1 mg/ml BSA. Store at -20°C . Stable for 1 year.

FOR RESEARCH USE ONLY. NOT FOR DIAGNOSTIC OR THERAPEUTIC USE.

www.ecmbiosciences.com
telephone: 859-879-2075
toll-free: 1-800-859-8202
info@ecmbiosciences.com

ECMBiosciences