

Sema-4D and Plexin B1 Receptor Antibody Sampler Kit

Catalog # SK6240

Kit Components:

Catalog#	Description	Type	Size	Applications	Species Reactivity	MW (kDa)
SM1881	Semaphorin-4D (C-terminal Region)	Mouse mAb	50 µl	WB, E	H, R, M	150
PP1841	Plexin B1 (C-terminal region)	Rabbit pAb	50 µl	WB, E	H, R, M	300
PX1845	Plexin B1 (C-terminal region)	Peptide	50µg	AB, E		
MS3001	Donkey Anti-Mouse Ig:HRP	Donkey pAb	100 µl	WB, E		
RS3251	Anti-Rabbit Ig Light-Chain Specific:HRP	Mouse mAb	100 µl	WB, E		

Applications: WB = Western blot, E = ELISA, AB = Antibody blocking.

Species: H = Human, R = Rat, M = Mouse.

Kit Summary:

The Sema-4D and Plexin B1 Receptor antibody sampler kit can be used to detect the changes in the expression of Semaphorin 4D and its receptor Plexin B1. The kit also includes a Plexin B1 peptide for antibody blocking experiments and secondary reagents for antibody detection.

Buffers and Storage:

Mouse monoclonal and rabbit polyclonal affinity-purified antibodies are supplied in phosphate-buffered saline, 50% glycerol, 1 mg/ml BSA, and 0.05% sodium azide. Store at -20°C. Stable for 1 year.

Secondary reagents are supplied in phosphate-buffered saline, 50% glycerol, and 1 mg/ml BSA. Store at -20°C. Stable for 1 year.

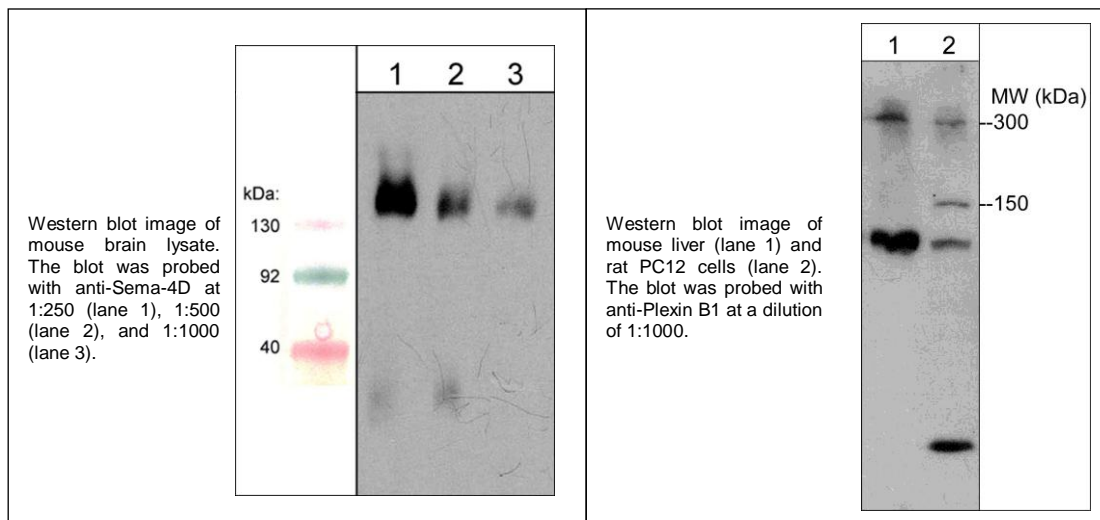
Blocking Peptide is supplied in phosphate-buffered saline and 0.05% sodium azide. Store at -20°C. Stable for 1 year.

Background:

Plexins are a family of large integral membrane proteins that complex with neuropilins to form semaphorin co-receptors. The extracellular region of plexins contains a semaphorin domain, multiple glycine-rich motifs, and MET-related sequences. The cytoplasmic region contains a Sex/Plexin domain and putative tyrosine phosphorylation sites that mediate signal transduction after activation. In addition to these motifs, the Plexin B1 and B2 family members contain cleavage sites for subtilisin-like proprotein convertases. These cleavage sites may be important for regulating assembly of heterodimeric receptors or release of the extracellular domain. Plexin-B1 is expressed as a 300 kDa precursor protein that can be cleaved into a 200 kDa a-subunit and a 100 kDa b-subunit. This plexin is the receptor for the class IV semaphorin, Sema-4D. Sema-4D activation of Plexin B1 recruits and activates c-Met, which can promote cell survival, migration, and angiogenesis.

References:

Tamagnone, L. et al. (1999) Cell 99:71.
Artigiani, S. et al. (2003) J Biol. Chem. 278(12):10094.
Basile, J.R. et al. (2006) PNAS 103(24):9017.



FOR RESEARCH USE ONLY. NOT FOR DIAGNOSTIC OR THERAPEUTIC USE.

www.ecmbiosciences.com
telephone: 859-879-2075
toll-free: 1-800-859-8202
info@ecmbiosciences.com

ECMBiosciences