

Robo2 (C-terminal region) Peptide

Cat. # RX2865

Size 50 µg

Background:

The Robo family of repulsive guidance receptors (Robo1-4) have important roles in controlling axon guidance and cell migration. These receptors are members of the immunoglobulin (Ig) superfamily and consist of an ectodomain with five Ig domains and three fibronectin type III repeats, a single transmembrane domain, and a long cytoplasmic tail that contains four blocks of conserved cytoplasmic sequences. In *Drosophila*, mutations in Robo, and its midline-expressed ligand Slit, result in too many axons crossing and staying at the midline. Several proteins that regulate the actin cytoskeleton, including cAbl, Ena, and Rho-family GTPases, contribute to the Robo signaling pathway. cAbl phosphorylates Robo1 at Tyr-1073, and this may inhibit Robo activity, while Slit-Robo signaling activates both Rac and Rho, and inactivates Cdc42. Thus, Robo guidance receptors control axon outgrowth and cell migration through activation of cell signaling pathways that regulate cytoskeletal dynamics.

References

- Kidd, T. et al. (1998) *Cell* 92:205.
Bashaw, G.J. et al. (2000). *Cell* 101:703.
Yang, L. & Bashaw, G.J. (2006). *Neuron* 52:595.

Peptide Sequence:

Robo2 synthetic peptide corresponding to amino acids in the C-terminal region of human Robo2. This sequence has significant homology to the same region in rat and mouse Robo2, and has low homology to other Robo family members.

Applications:

Blocking 1:1000

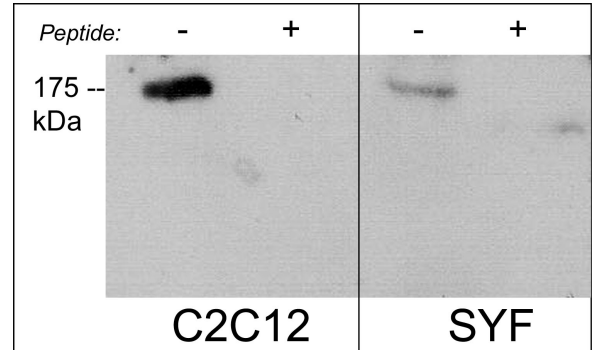
ELISA 50 ng/well

End user should determine optimal concentration dependent on the concentration of the antibody.
Recommended for blocking antibody reactivity in Western blot and immunocytochemistry.
ELISA established in 96-well Nunc immunoplates where peptide was bound to plates for 2 hrs in 0.1 M sodium carbonate buffer, pH 8.5.

Related Products:

- RP2791 Robo1 (C-terminal region) Rabbit Polyclonal
RP2861 Robo2 (C-terminal Region) Rabbit Polyclonal
SM1881 Semaphorin-4D (C-terminal Region) Mouse Monoclonal
SP1241 Semaphorin-3A (C-terminal) Rabbit Polyclonal
NP2111 Neuropilin-1 (a1 CUB Domain) Rabbit Polyclonal
PP1301 Plexin A1 (Sema Domain) Rabbit Polyclonal

FOR RESEARCH USE ONLY. NOT FOR DIAGNOSTIC OR THERAPEUTIC USE.



Western blot analysis of C2C12 and SYF mouse cell lines. The blots were probed with anti-Robo2 (C-terminal region) in the absence (-) or presence (+) of Robo2 (C-terminal region) blocking peptide (RX2865).

Buffer and Storage:

Blocking Peptide is supplied in 50µl phosphate-buffered saline and 0.05% sodium azide.

Store at -20°C. Stable for 1 year.

Specificity:

This peptide is recognized by Robo2 (C-terminal region) antibody (RP2861) in ELISA, and has been shown to block the reactivity of RP2861 in Western blot, and is recommended for blocking in immunocytochemistry.

www.ecmbiosciences.com
telephone: 859-879-2075
toll-free: 1-800-859-8202
email: info@ecmbiosciences.com

ECMBiosciences

Rev 1/20/2009