

# Anti-Phosphoserine/threonine

Cat. # **PP2551**  
Host **Rabbit Polyclonal**  
Size **100µl**

## Background:

Phosphorylation of specific serine or threonine residues is an important post-translational modification for regulating the activity of most proteins. Stimulation of a variety of cell signaling pathways activates the receptor and non-receptor ser/thr kinases that mediate these protein modifications. Antibodies that can detect phosphoserine or phosphothreonine residues are excellent tools for characterizing changes in the post-translational state of a broad range of phosphorylated proteins. Immunoprecipitation of proteins of interest, followed by detection of phosphoserine or phosphothreonine using anti-phosphoserine antibody is commonly used to correlate changes in phosphorylation state with alterations in protein activity.

## References:

Krishna, R.G. & Wold, F. (1993) *Adv Enzymol Rel Areas Mol Biol* 67:265.  
Yaffe, M.B. and Elia, A.E. (2001) *Curr Opin Cell Biol* 13, 131-8.

## Immunogen:

Anti-Phosphoserine/threonine was generated from a generic phosphoserine-containing peptide.

## Buffer and Storage:

Rabbit polyclonal, affinity-purified antibody is supplied in 100µl phosphate-buffered saline, 50% glycerol, 1 mg/ml BSA, and 0.05% sodium azide. Store at -20°C. Do not aliquot. Stable for 1 year.

## Applications:

Western blotting 1:1000 dilution<sup>†</sup>  
ELISA 1:2000 dilution  
Immunoprecipitation 1:100  
Immunocytochemistry 1:50

End user should determine optimal dilution for their particular applications and experiments.

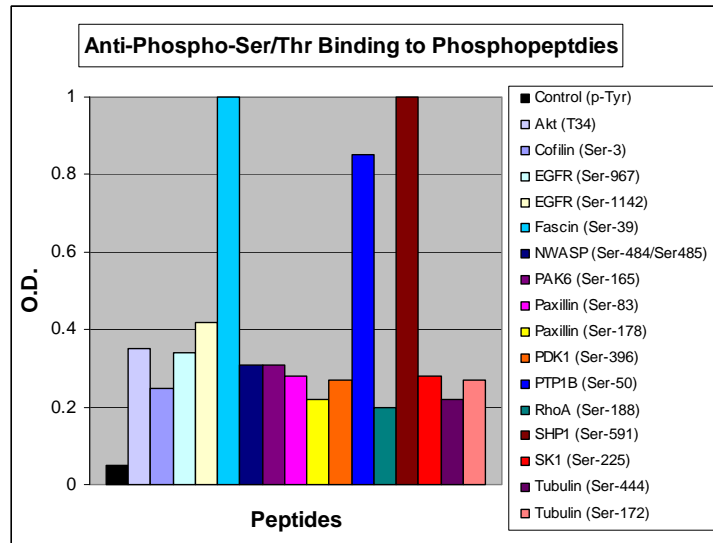
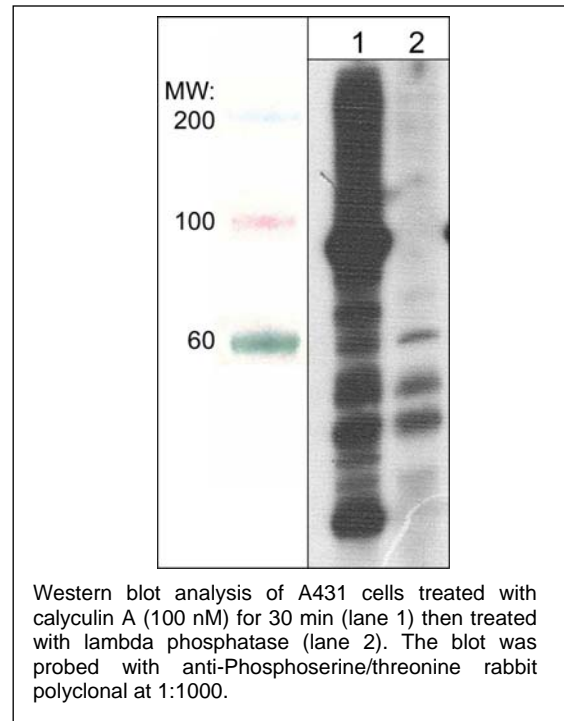
<sup>†</sup>Membrane was incubated with diluted antibody in 5% non-fat milk, PBS, 0.04% Tween20 for 1 hour at room temp.

## Specificity:

This antibody was cross-adsorbed to unphosphorylated peptide then affinity purified using phospho-serine peptide (without carrier). The antibody detects many serine or threonine phosphorylated proteins by western blot and ELISA.

## Related Products:

PP2221 Anti-Phosphotyrosine Rabbit Polyclonal  
SP1531 SHP1 (Ser-591), phospho-specific Rabbit Polyclonal  
EP1931 EGFR (Ser-1142), phospho-specific Rabbit Polyclonal



LP2431 LIMK1 (Ser-323), phospho-specific Rabbit Polyclonal  
AP1001 Akt (Thr-34), phospho-specific Rabbit Polyclonal  
PP1551 PAK6 (Ser-165), phospho-specific Rabbit Polyclonal

FOR RESEARCH USE ONLY. NOT FOR DIAGNOSTIC OR THERAPEUTIC USE.

www.ecmbiosciences.com  
telephone: 859-879-2075  
toll-free: 1-800-859-8202  
info@ecmbiosciences.com

ECMBiosciences