

# PKC $\delta$ (N-terminal region)

Cat. # PM2421

Host Mouse Monoclonal IgG2b

Size 100  $\mu$ l

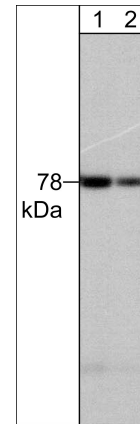
## **Background:**

The Protein Kinase C (PKC) family of homologous serine/threonine protein kinases is involved in a number of processes such as growth, differentiation, and cytokine secretion. At least eleven isozymes have been described. PKC consists of a single polypeptide chain containing four conserved regions (C) and five variable regions (V). The N-terminal half interacts with PKC activators Ca<sup>2+</sup>, phospholipid, diacylglycerol, or phorbol ester, while the C-terminal half contains the catalytic domain. The conventional PKC subfamily ( $\alpha$ ,  $\beta$ I,  $\beta$ II, and  $\gamma$ ) is regulated by both Ca<sup>2+</sup> and diacylglycerol. The PKC pathway represents a major signal transduction system that is activated following ligand-stimulation of transmembrane receptors by hormones, neurotransmitters, and growth factors. The phosphorylation of multiple sites in PKCs regulates their activity.

## **References**

Nishizuka, Y. (1988) Nature 334:661.

Kawakami et al. (2003) Proc. Natl. Acad. Sci. USA 100:9470-9475.



Western blot analysis of adult mouse brain tissue lysate. The blot was probed with mouse monoclonal anti-PKC $\delta$  (N-terminal region) at 1:125 (lane 1) and 1:500 (lane 2).

## **Immunogen:**

Clone (M242) was generated from a recombinant human protein that included amino acids residues in the N-terminal region. This sequence is conserved in rat and mouse PKC $\delta$ , and has low homology to other PKC family members.

## **Applications:**

WB 1:250

ELISA 1:1000

End user should determine optimal dilution for their particular applications and experiments. Western blot membranes were incubated with diluted antibody in 5% non-fat milk, PBS, 0.04% Tween20 for 1 hour at room temperature.

## **Related Products:**

PM1101 PKC ( $\alpha$ , $\beta$ , $\gamma$ ) Mouse Monoclonal

PM2371 PKC $\alpha$  (Central region) Mouse Monoclonal

PP1091 PKC $\alpha$  (Ser-657/Tyr-658), phospho-specific Rabbit Polyclonal

PM2171 PKC $\theta$  (N-terminal region) Mouse Monoclonal

## **Buffer and Storage:**

Mouse monoclonal antibody purified with protein A chromatography is supplied in 100 $\mu$ l phosphate-buffered saline, 50% glycerol, 1 mg/ml BSA, and 0.05% sodium azide. Store at -20°C. Do not aliquot. Stable for 1 year.

## **Specificity:**

This antibody detects a 78 kDa\* protein corresponding to the molecular mass of PKC $\delta$  on SDS-PAGE immunoblots of adult mouse brain tissue lysate.

\*All molecular weights (MW) are confirmed by comparison to Bio-Rad Rainbow Markers and to western blot mobilities of known proteins with similar MW.

FOR RESEARCH USE ONLY. NOT FOR DIAGNOSTIC OR THERAPEUTIC USE.

www.ecmbiosciences.com  
telephone: 859-879-2075  
toll-free: 1-800-859-8202  
tech: info@ecmbiosciences.com

**ECM**Biosciences

Rev 7/22/2008