

Anti-Paxillin

Cat. # **PM1071**
Host **Mouse Monoclonal IgG1**
Size **100µl**

Background:

Paxillin, a focal adhesion protein, is involved in focal adhesion formation during cell adhesion and migration. Paxillin contains LD motifs, LIM domains, and SH3-/SH2-binding domains that participate in a variety of protein-protein interactions with kinases, GTPase-activating proteins, and cytoskeletal proteins. Phosphorylation of paxillin occurs at both tyrosine and serine sites. Serine phosphorylation of paxillin occurs in response to growth-factor activation and fibronectins. Both JNK1 and cdc2 kinases can phosphorylate serine 178 in paxillin. The mutant form of paxillin (S178A) decreases the migration of keratocytes and epithelial cells. Thus, phosphorylation paxillin at serine 178 may be important during cell migration.

References:

Huang, C. et al. (2003) Nature 424:219-223.
Huang, C. et al. (2004) Cell Cycle 3(1):4-6.
Woodrow, M.A. (2003) Exp. Cell. Res. 287(2):325-338.

Immunogen:

Clone (M107) was generated from full-length recombinant human paxillin.

Buffer and Storage:

Mouse monoclonal antibody purified with protein A chromatography is supplied in 100µl phosphate-buffered saline, 50% glycerol, 1 mg/ml BSA, and 0.05% sodium azide. Store at -20°C. Do not aliquot. Stable for 1 year.

Applications:

Western blotting	1:1000 dilution [†]	Immunoprecipitation	1-5 µl
ELISA	1:2000 dilution	Immunocytochemistry	1:500

End user should determine optimal dilution for their particular applications and experiments.

[†]Membrane was incubated with diluted antibody in 5% non-fat milk, PBS, 0.04% Tween20 for 1 hour at room temperature.

Specificity:

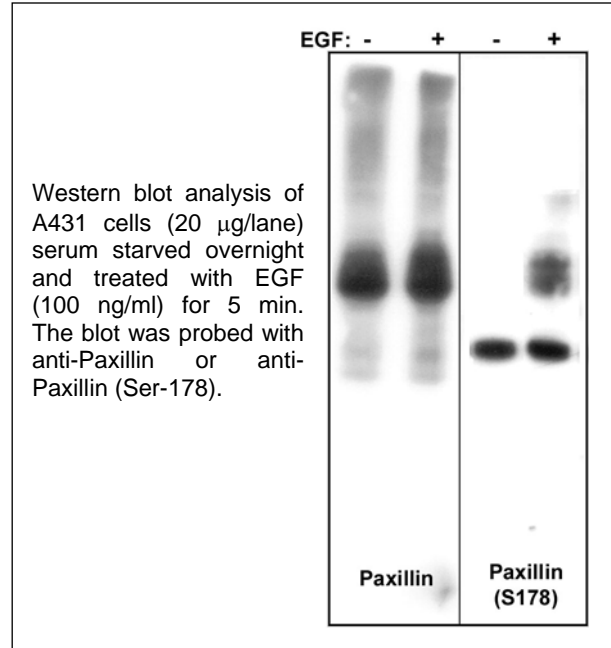
This antibody detects a 68kDa* protein corresponding to the molecular mass of paxillin on SDS-PAGE immunoblots of A431 cells. Similar results were seen in various cells and tissues from rat, mouse, and chicken origin.

*All molecular weights (MW) are confirmed by comparison to Bio-Rad Rainbow Markers and to western blot mobilities of known proteins with similar MW.

Related Products:

PM1021 Paxillin (Tyr-31), phospho-specific Rabbit Polyclonal
PP1051 Paxillin (Ser-178), phospho-specific Rabbit Polyclonal

AL9201 A431 EGF Control Lysate
AL9301 A431 + EGF (5 min) Lysate



FOR RESEARCH USE ONLY. NOT FOR DIAGNOSTIC OR THERAPEUTIC USE.

www.ecmbiosciences.com
telephone: 859-879-2075
toll-free: 1-800-859-8202
tech: info@ecmbiosciences.com

ECMBiosciences