

Phospho-Tyrosine, -Serine, -Threonine Antibody Sampler Kit

Catalog # PK6330

Kit Components:

Catalog#	Description	Host	Size	Applications	Species Reactivity
PP2551	Anti-Phosphoserine/threonine	Rabbit pAb	100 µl	WB, E, IP, ICC	H, R, M
PP2221	Anti-Phosphotyrosine	Rabbit pAb	100 µl	WB, E, IP, ICC	H, R, M, C
PM3801	Anti-Phosphoserine/threonine	Mouse mAb	100 µl	WB, E, IP, ICC	H, R, M
PM3751	Anti-Phosphotyrosine	Mouse mAb	100 µl	WB, E, IP, ICC	H, R, M, C
MS3001	Anti-Mouse Ig:HRP	Donkey pAb	100 µl	WB, E	
RS3251	Anti-Rabbit Ig Light-Chain Specific:HRP	Mouse mAb	100 µl	WB, E	

Applications: WB = western blot, E = ELISA, ICC = Immunocytochemistry, IP = immunoprecipitation. Species: H = Human, R = Rat, M = Mouse

Kit Summary:

The phospho-tyrosine, -serine, and -threonine antibody sampler kit can be used to detect changes in phosphorylation at tyrosine, serine, and threonine residues within proteins. The kit also includes secondary reagents for detection of these antibodies.

Background:

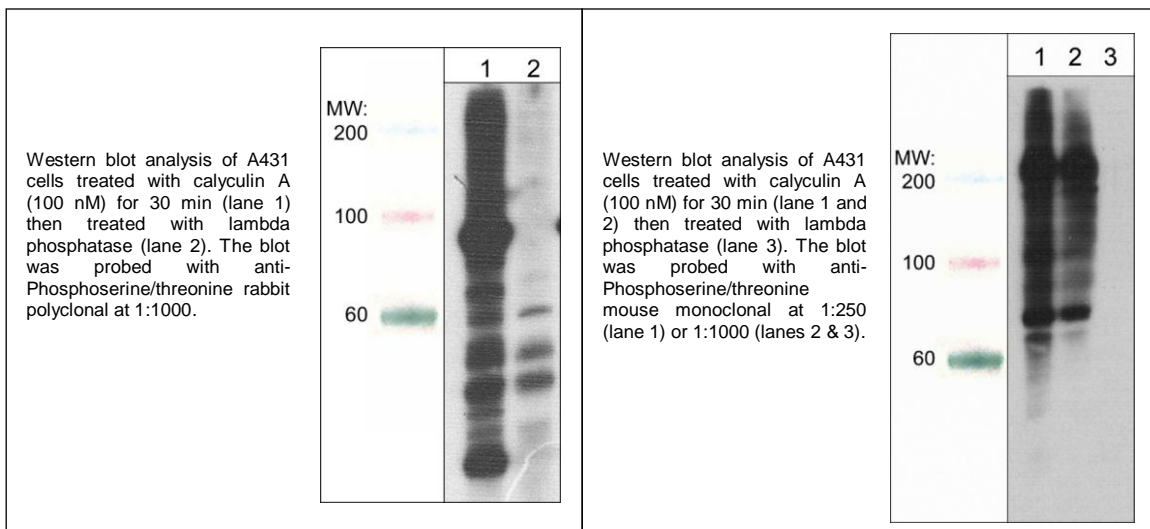
Phosphorylation of specific tyrosine (tyr), serine (ser), or threonine (thr) residues is an important post-translational modification for regulating the activity of most proteins. Stimulation of a variety of cell signaling pathways activates the receptor and non-receptor ser/thr and tyr kinases that mediate these protein modifications. Antibodies that can detect phosphotyrosine, phosphoserine, or phosphothreonine residues are excellent tools for characterizing changes in the post-translational state of a broad range of phosphorylated proteins. Immunoprecipitation of proteins of interest, followed by detection of tyr, ser, and thr phosphorylation using these antibodies is commonly used to correlate changes in phosphorylation state with alterations in protein activity.

Buffers and Storage:

Mouse monoclonal and rabbit polyclonal antibodies are supplied in 50µl phosphate-buffered saline, 50% glycerol, 1 mg/ml BSA, and 0.05% sodium azide. Store at -20°C. Stable for 1 year.

References:

- Ross, A.H. et al. (1981) Nature 294:654.
 Wang, J.Y.J. (1988) Anal. Biochem 172:1.
 Krishna, R.G. & Wold, F. (1993) Adv Enzymol Rel Areas Mol Biol 67:265.
 Yaffe, M.B. and Elia, A.E. (2001) Curr Opin Cell Biol 13, 131-8.



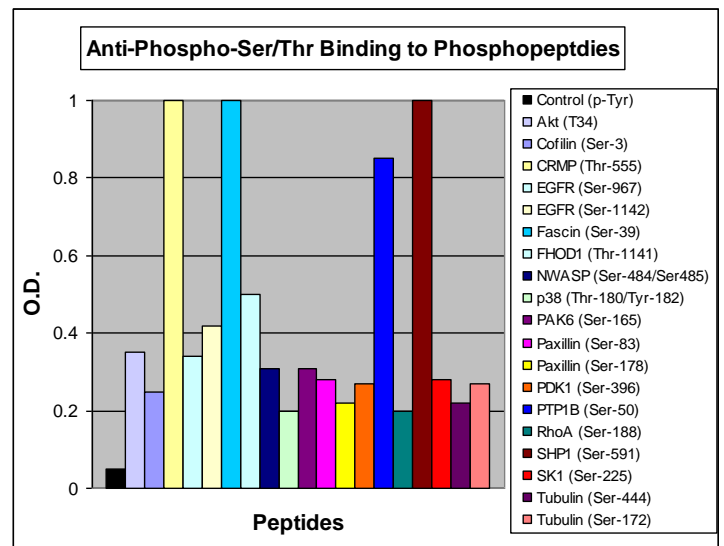
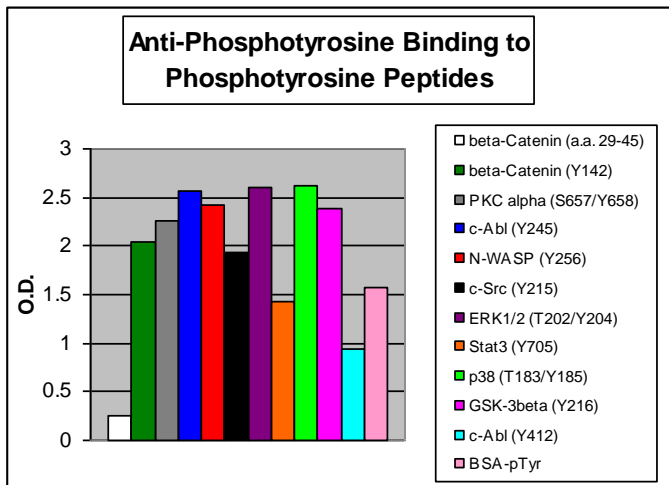
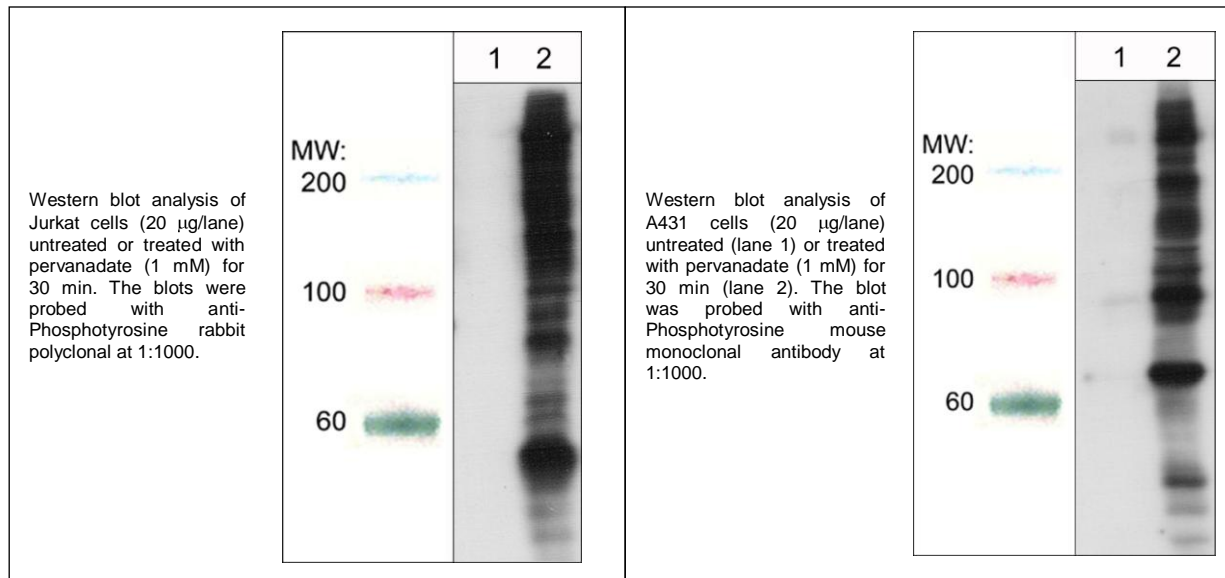
FOR RESEARCH USE ONLY. NOT FOR DIAGNOSTIC OR THERAPEUTIC USE.

www.ecmbiosciences.com
 telephone: 859-879-2075
 toll-free: 1-800-859-8202
 info@ecmbiosciences.com

ECMBiosciences

Phospho-Tyrosine, Serine, Threonine Antibody Sampler Kit

Catalog # PK6330



Elisa data using anti-Phosphotyrosine and anti-Phosphoserine/threonine rabbit polyclonal antibodies

FOR RESEARCH USE ONLY. NOT FOR DIAGNOSTIC OR THERAPEUTIC USE.

www.ecmbiosciences.com
 telephone: 859-879-2075
 toll-free: 1-800-859-8202
 info@ecmbiosciences.com

ECMBiosciences