

Neuropilin-1 (a1 CUB Domain)

Cat. # NP2111

Host Rabbit Polyclonal

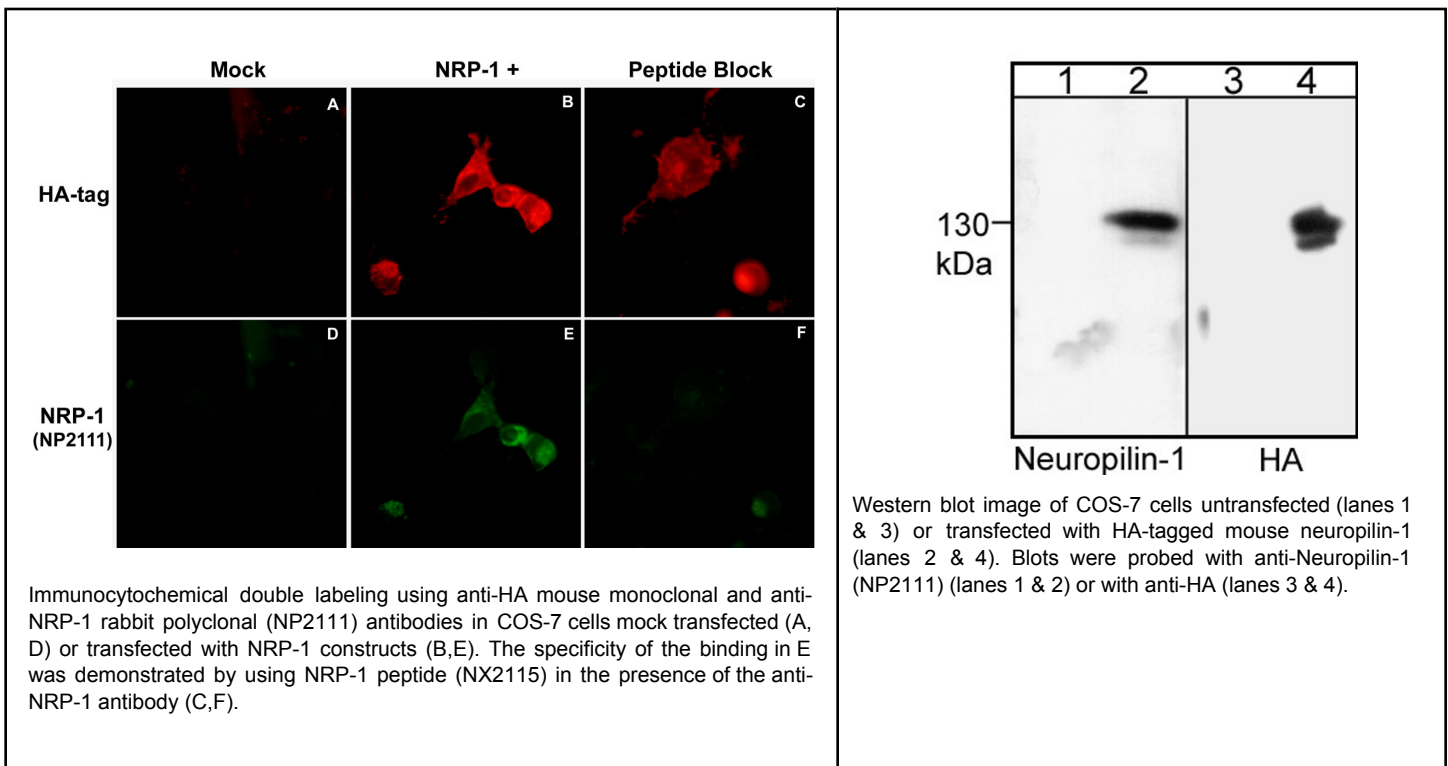
Size 100 µl

Background:

Neuropilins are transmembrane proteins that contain two CUB domains (a1 and a2), two coagulation factor-like domains (b1 and b2), and a MAM domain in the extracellular region. These proteins have short cytoplasmic domains that include a PDZ-binding motif. The neuropilin (NRP) family includes NRP-1, NRP-2A, and NRP-2B. NRP-1 has been implicated as a receptor involved in axon guidance and VEGF signaling. NRP-1 mediates activation of intracellular signaling pathways through interaction with its co-receptors, Plexin-A1 and VEGFRs. The expression of NRP-1, along with the co-receptor Plexin-A1, is upregulated in neurons after central nervous system injury. The axons from these neurons cannot cross semaphorin 3A-containing regions at the site of injury. Thus, semaphorin 3A and its co-receptors, Plexin-A1 and Neuropilin-1, may have significant roles in axon regeneration after neuronal injury.

References

- He, Z. & Tessier-Lavigne, M. (1997) *Cell* 90:739.
 Nakamura, F. & Goshima, Y. (2002) *Adv Exp Med Biol.* 515:55.
 Takahashi, T. et al. (1999) *Cell* 99:59.
 Saban, M.R. et al. (2008) *Am J Phys Renal Phys* 295(1):F60 (ICC: H. Urothelium)



FOR RESEARCH USE ONLY. NOT FOR DIAGNOSTIC OR THERAPEUTIC USE.

web: www.ecmbiosciences.com

telephone: 859-879-2075

email: info@ecmbiosciences.com

toll-free: 1-800-859-8202

ECMBiosciences

Neuropilin-1 (a1 CUB Domain)

Cat. # NP2111

Host Rabbit Polyclonal

Size 100 µl

Immunogen:

Neuropilin-1 synthetic peptide (coupled to carrier protein) corresponding to amino acids within the a1 CUB domain of human neuropilin-1. This sequence is highly conserved in rat and mouse neuropilin-1, and has low homology to neuropilin-2.

Buffer and Storage:

Rabbit polyclonal, affinity-purified antibody is supplied in 100µl phosphate-buffered saline, 50% glycerol, 1 mg/ml BSA, and 0.05% sodium azide. Store at -20°C. Do not aliquot. Stable for 1 year.

Applications:

WB 1:1000 IHC 1:50
ELISA 1:2000
ICC 1:50

End user should determine optimal dilution for their particular applications and experiments.
Western blot membranes were incubated with diluted antibody in 5% non-fat milk, PBS, 0.04% Tween20 for 1hour at room temperature.

Specificity:

This antibody detects a 130 kDa* protein corresponding to the apparent molecular mass of neuropilin-1 on SDS-PAGE immunoblots of COS-7 cells transfected with mouse neuropilin-1. In immunocytochemistry, this antibody co-localizes with anti-HA in Cos-7 cells transfected with HA-tagged mouse neuropilin-1.

*All molecular weights (MW) are confirmed by comparison to Bio-Rad Rainbow Markers and to western blot mobilities of known proteins with similar MW.

Related Products:

SP1221 Semaphorin-3A (Central Region) Rabbit Polyclonal

SP1241 Semaphorin-3A (C-terminal) Rabbit Polyclonal

SP1401 Semaphorin-3A (N-terminal) Rabbit Polyclonal

PP1301 Plexin A1 (Sema Domain) Rabbit Polyclonal

PP1471 Plexin A1 (Sema Domain) Rabbit Polyclonal

PP1841 Plexin B1 (C-terminal Region) Rabbit Polyclonal

FOR RESEARCH USE ONLY. NOT FOR DIAGNOSTIC OR THERAPEUTIC USE.

web: www.ecmbiosciences.com

telephone: 859-879-2075

email: info@ecmbiosciences.com

toll-free: 1-800-859-8202

ECMBiosciences