

Mouse Tissue Lysate Sampler Kit

Catalog # MK6900

Kit Components:

Catalog#	Description	Size	Loading*
BL7011	Mouse Brain Lysate	100 μ l	20 μ l/lane
HL7021	Mouse Heart Lysate	100 μ l	20 μ l/lane
KL7031	Mouse Kidney Lysate	100 μ l	20 μ l/lane
LL7041	Mouse Liver Lysate	100 μ l	20 μ l/lane
ML7051	Mouse Muscle Lysate	100 μ l	20 μ l/lane
SL7061	Mouse Spleen Lysate	100 μ l	20 μ l/lane

*Recommended volume of lysate per well in 15-well mini-gel.
End user should determine optimal volume for their particular experimental conditions.

Kit Description:

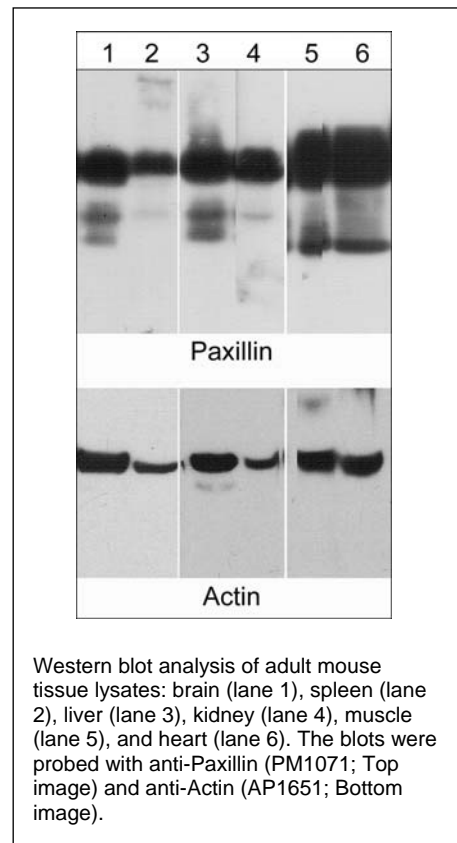
The mouse tissue lysate sampler kit contains Western blot lysates from several adult mouse (Balb/c) tissues, including brain, muscle, heart, kidney, liver, and spleen. This kit can be used to examine patterns of mouse protein expression.

Lysate Preparation:

Brain (cerebrum and cerebellum), gastrocnemius muscle, whole heart, kidney, liver, and spleen were dissected from adult mouse (Balb/c). The tissues were rinsed in Hank's buffered saline solution and lysed in boiling 1% SDS, 1.0 mM sodium ortho-vanadate, 10 mM Tris (pH 7.4) buffer. Each lysate was sonicated then diluted to the final concentration in electrophoresis sample buffer.

Buffers and Storage:

Cell Lysates are supplied at a concentration of 1 mg/ml in electrophoresis sample buffer (62.5 mM Tris pH 6.8, 2% SDS, 5% glycerol, 0.003% bromophenol blue, 0.9% β -mercaptoethanol). Store at -20°C . Do not boil or dilute. Stable for 1 year.



FOR RESEARCH USE ONLY. NOT FOR DIAGNOSTIC OR THERAPEUTIC USE.

www.ecmbiosciences.com
telephone: 859-879-2075
toll-free: 1-800-859-8202
info@ecmbiosciences.com

ECMBiosciences

Rev 04/09