

Lck (N-terminal region)

Cat. # LM2541

Host Mouse Monoclonal IgG1

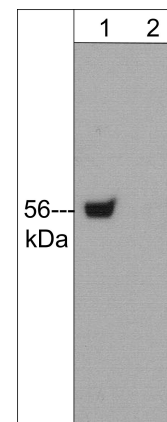
Size 100 µl

Background:

c-Src was the first proto-oncogenic non-receptor tyrosine kinase characterized in human. The Src family is composed of nine members in vertebrates, including c-Src, Yes, Fgr, Yrk, Fyn, Lyn, Hck, Lck, and Blk. Src-family kinases transduce signals that are involved in the control of a variety of cellular processes, including proliferation, differentiation, motility, and adhesion. Src-family kinases contain an N-terminal cell membrane anchor followed by SH3 and SH2 domains. The activity of Src family kinases is regulated by tyrosine phosphorylation at multiple sites. Phosphorylation of conserved N-terminal and central region tyrosine residues promotes activation, while phosphorylation of conserved C-terminal tyrosine residues downregulates Src kinase activity. Thus, tyrosine phosphorylation of Src kinases is critical for regulating their activity.

References

Stover, D.R. et al. (1996) J Biol Chem 271(21):12481.
Vadlamudi, R.K. et al. (2003) FEBS Letters 543:76.



Western blot analysis of human Jurkat (lane 1) and mouse SYF cells transformed with c-Src (lane 2). The Blot was probed with mouse monoclonal anti-Lck (N-terminal region) at 1:1000.

Immunogen:

Clone (M254) was generated from a recombinant protein containing amino acids in the N-terminal region of human Lck. This sequence has high homology to similar regions in rat and mouse Lck, but low homology to similar regions in other Src kinases.

Applications:

WB 1:1000
ELISA 1:2000

End user should determine optimal dilution for their particular applications and experiments. Western blot membranes were incubated with diluted antibody in 5% non-fat milk, PBS, 0.04% Tween20 for 1 hour at room temperature.

Related Products:

SM2591 c-Src (N-terminal region) Mouse Monoclonal
SM2611 c-Src (Tyr-530), phospho-specific [Conserved site] Mouse Monoclonal
SP1371 c-Src (Tyr-215), phospho-specific [Conserved site] Rabbit Polyclonal
YM2501 Yes (N-terminal region) Mouse Monoclonal
FM2381 Fyn (N-terminal region) Mouse Monoclonal
CM2471 Csk (N-terminal region) Mouse Monoclonal

FOR RESEARCH USE ONLY. NOT FOR DIAGNOSTIC OR THERAPEUTIC USE.

Buffer and Storage:

Mouse monoclonal antibody purified with protein A chromatography is supplied in 100µl phosphate-buffered saline, 50% glycerol, 1 mg/ml BSA, and 0.05% sodium azide. Store at -20°C. Do not aliquot. Stable for 1 year.

Specificity:

The antibody detects a 56 kDa* protein corresponding to Lck on SDS-PAGE immunoblots of human Jurkat cells, but does not detect c-Src in mouse SYF cells transformed with c-Src.

*All molecular weights (MW) are confirmed by comparison to Bio-Rad Rainbow Markers and to western blot mobilities of known proteins with similar MW.

www.ecmbiosciences.com
telephone: 859-879-2075
toll-free: 1-800-859-8202
tech: info@ecmbiosciences.com

ECMBiosciences

Rev 9/3/2008