

JNK1 (C-terminal region)

Cat. # JM2671

Host Mouse Monoclonal IgG1

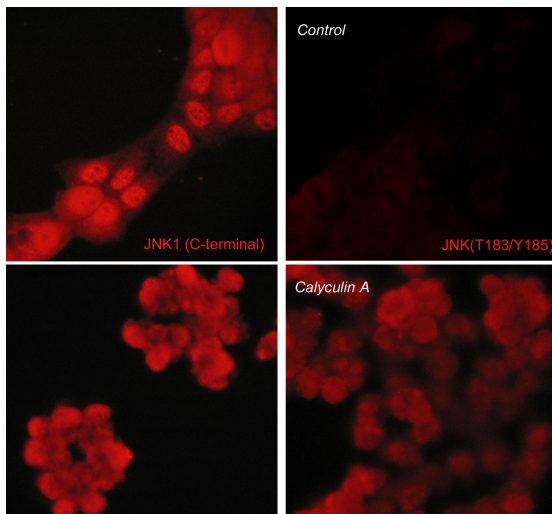
Size 100 µl

Background:

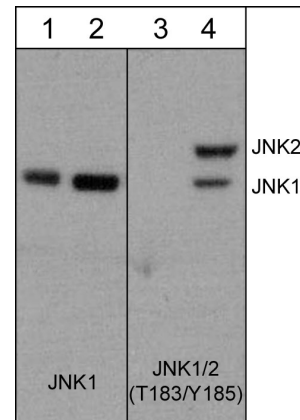
The stress-activated protein kinases (SAPK) or Jun-amino-terminal kinases (JNK) are potently activated by stressors such as UV and gamma radiation. Similar to other MAP Kinases, the core signaling unit is composed of a MAPKKK, usually MEKK1-4 or a mixed lineage kinase (MLK), which phosphorylate and activate MKK4-7, leading to dual phosphorylation and activation of JNK kinases. Rho-GTPases (Rac1 and cdc42) can stimulate MEKKs and MLKs, while MKKs can be activated by a GTPase-independent pathway that involves the germinal center kinase family. There are three JNK genes (JNK1, 2, 3) with further diversification resulting from alternative splicing. Active JNK dimers can translocate to the nucleus to regulate transcription through phosphorylation of c-Jun, ATF-2 and other transcription factors.

References

- Davis, R.J. (1999) *Biochem. Soc. Symp.* 64:1.
 Ichijo, H. (1999) *Oncogene* 18:6087.
 Kyriakis, J.M. (1999) *J. Biol. Chem.* 274:5259.
 Whitmarsh, A.J. & Davis, R.J. (1998) *Trends Biochem. Sci.* 23:481.



Immunocytochemical labeling of JNK in control (Top row) or calyculin A-treated A431 cells (Bottom row). The cells were labeled with mouse monoclonal JNK (C-terminal region) (Left) or mouse monoclonal JNK (Thr-183/Tyr-185) (Right). The antibodies were detected using goat anti-mouse DyLight 594.



Western blot analysis of PC12 cells untreated (lanes 1 & 3) or treated with calyculin A (100 nM) for 30 minutes (lanes 2 & 4). The blot was probed with anti-JNK1 (lanes 1 & 2) or anti-JNK1 (T183/Y185) (lanes 3 & 4).

FOR RESEARCH USE ONLY. NOT FOR DIAGNOSTIC OR THERAPEUTIC USE.

web: www.ecmbiosciences.com

telephone: 859-879-2075

email: info@ecmbiosciences.com

toll-free: 1-800-859-8202

ECMBiosciences

JNK1 (C-terminal region)

Cat. # JM2671

Host Mouse Monoclonal IgG1

Size 100 μ l

Immunogen:

Clone M267 was generated from a recombinant protein corresponding to amino acid residues in the C-terminal region of human JNK1. This sequence has high homology to rat and mouse JNK1, and has homology to similar regions in JNK2 and JNK3.

Buffer and Storage:

Mouse monoclonal purified with protein A chromatography is supplied in 100 μ l phosphate-buffered saline, 50% glycerol, 1 mg/ml BSA, and 0.05% sodium azide. Store at -20°C . Do not aliquot. Stable for 1 year.

Applications:

WB 1:1000 ICC 1:100

ELISA 1:2000

IHC 1:100

End user should determine optimal dilution for their particular applications and experiments.
Western blot membranes were incubated with diluted antibody in 5% non-fat milk, PBS, 0.04% Tween20 for 1hour at room temperature.

Specificity:

This antibody detects a 46 kDa* protein corresponding to the apparent molecular mass of JNK1 on SDS-PAGE immunoblots of human A431 and HeLa, as well as rat PC12 cells.

*All molecular weights (MW) are confirmed by comparison to Bio-Rad Rainbow Markers and to western blot mobilities of known proteins with similar MW.

Related Products:

- JM2681 JNK (Thr-183/Tyr-185), phospho-specific Mouse Monoclonal
- EM2331 ERK1 (C-terminal Region) Mouse Monoclonal
- EM2061 ERK1/2 (Thr-202/Tyr-204), phospho-specific Mouse Monoclonal
- PM1381 p38 α MAP Kinase (C-terminal) Mouse Monoclonal
- PM1391 p38 MAP Kinase (Thr-180/Tyr-182), phospho-specific Mouse

FOR RESEARCH USE ONLY. NOT FOR DIAGNOSTIC OR THERAPEUTIC USE.

web: www.ecmbiosciences.com

email: info@ecmbiosciences.com

telephone: 859-879-2075

toll-free: 1-800-859-8202

ECMBiosciences