

Fascin (clone 55K2)

Cat. # FM2651

Host Mouse Monoclonal IgG1

Size 100 µl

Background:

Fascin is an actin filament bundling protein localized to lamellipodia and filopodia where it has important roles in cell motility. Regulation of fascin occurs through PKC-mediated phosphorylation of Ser-39 in the F-actin binding site. Cell permeant peptides that block PKC phosphorylation of Ser-39 increase cell migration, while peptides that block fascin binding to F-actin alter lamellipodial morphology and cause aberrant cell motility. Studies using RNA interference of fascin show that fibroblasts have reduced number and abnormal morphology of filopodia, while Ser-39 phosphorylation status may determine filopodial frequency. In *Drosophila* neurons, fascin deficiency causes alterations in actin filaments and leads to abnormal morphology of developing neurons. Thus, fascin is a critical element of actin-based motility in various cell types.

References

- Adams, J.C. (2004) *Curr Opin Cell Biol.* 16(5):590.
Vignjevic, D. et al. (2006) *J Cell Biol.* 174(6):863.
Kraft, R. et al. (2006) *J Neurosci* 26:8734.
Aratyn, Y.S. et al. (2007) *Mol Biol Cell.* 18(10):3928.

Immunogen:

Clone (55K2) was generated from full-length human fascin purified from HeLa cells. This sequence has high homology to rat and mouse fascin.

Applications:

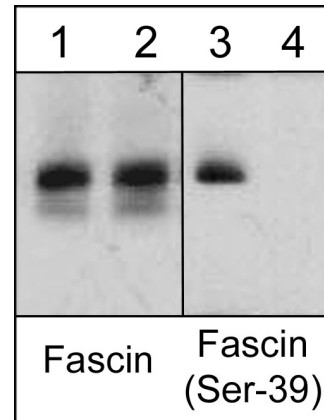
WB	1:2000	ICC	1:200
ELISA	1:4000		
IHC	1:200		

End user should determine optimal dilution for their particular applications and experiments. Western blot membranes were incubated with diluted antibody in 5% non-fat milk, PBS, 0.04% Tween20 for 1 hour at room temperature.

Related Products:

- FP2661 Fascin (Ser-39), phospho-specific Rabbit Polyclonal
AM2021 Actin (C-terminal region) Mouse Monoclonal
AP1651 Actin (N-terminal Region) Rabbit Polyclonal
AP1671 Actin (Tyr-53), phospho-specific Rabbit Polyclonal
CP1131 Cofilin 1 (N-terminus) Rabbit Polyclonal
CP1151 Cofilin 1 (Ser-3), phospho-specific Rabbit Polyclonal

FOR RESEARCH USE ONLY. NOT FOR DIAGNOSTIC OR THERAPEUTIC USE.



Western blot analysis of human HeLa cells treated with Calyculin A (100 nM) for 30 min (lanes 1 & 3) before treatment with lambda phosphatase (lanes 2 & 4). The blots were probed with anti-Fascin (clone 55K2) (lanes 1 & 2) and anti-Fascin (Ser-39) (lanes 3 & 4).

Buffer and Storage:

Mouse monoclonal antibody purified with protein A chromatography is supplied in 100µl phosphate-buffered saline, 50% glycerol, 1 mg/ml BSA, and 0.05% sodium azide. Store at -20°C. Do not aliquot. Stable for 1 year.

Specificity:

The antibody detects a 55 kDa* band corresponding to fascin on SDS-PAGE immunoblots of human A431 and HeLa, as well as mouse C2C12 and rat PC12.

*All molecular weights (MW) are confirmed by comparison to Bio-Rad Rainbow Markers and to western blot mobilities of known proteins with similar MW.

www.ecmbiosciences.com
telephone: 859-879-2075
toll-free: 1-800-859-8202
email: info@ecmbiosciences.com

ECMBiosciences

Rev 10/14/2008