

FAK (Central region)

Cat. # FM2461

Host Mouse Monoclonal IgG1

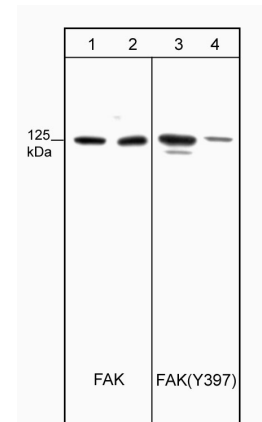
Size 100 µl

Background:

Focal adhesion kinase (FAK) is a widely expressed cytoplasmic protein tyrosine kinase involved in signal transduction pathways important for cell spreading, migration and survival. Activation of FAK by integrin clustering leads to autophosphorylation at Tyr-397, which is a binding site for Src family kinases, PI3-Kinase, and PLC γ . The recruitment of Src family kinases results in the phosphorylation of tyrosine 407, 576, and 577 in the catalytic domain, and tyrosine 871 and 925 in the carboxy-terminal region of FAK. Thus, the phosphorylation of Tyr-397 is a critical step in the activation of FAK.

References

- Cobb, B.S. et al. (1994) Mol. Cell. Biol. 14:147.
Parsons, J.T. et al. (2000) Oncogene 19:5606.
Schaller, M.D. et al. (1994) Mol. Cell. Biol. 14:1680.
Schlaepfer, D.D. et al. (1994) Nature 372:786-791.



Western blot analysis of HUVECs untreated (lanes 1 & 3) or treated with alkaline phosphatase (lanes 2 & 4). Blots were probed with mouse monoclonal anti-FAK (lanes 1 & 2) and anti-FAK (Tyr-397) (lanes 3 & 4).

Immunogen:

Clone (M246) was generated from a recombinant protein containing amino acid in the central region of human FAK. This sequence has high homology to similar regions in rat and mouse FAK.

Applications:

WB 1:250
ELISA 1:1000

End user should determine optimal dilution for their particular applications and experiments. Western blot membranes were incubated with diluted antibody in 5% non-fat milk, PBS, 0.04% Tween20 for 1 hour at room temperature.

Related Products:

FM1211 FAK (Tyr-397), phospho-specific Mouse Monoclonal
PM1021 Paxillin (Tyr-31), phospho-specific Mouse Monoclonal
PP1051 Paxillin (Ser-178), phospho-specific Rabbit Polyclonal
PP1341 Paxillin (Ser-83), phospho-specific Rabbit Polyclonal
PM1071 Paxillin Mouse Monoclonal
PM2291 PYK2 (C-terminal region) Mouse Monoclonal

FOR RESEARCH USE ONLY. NOT FOR DIAGNOSTIC OR THERAPEUTIC USE.

Buffer and Storage:

Mouse monoclonal antibody purified with protein A chromatography is supplied in 100µl phosphate-buffered saline, 50% glycerol, 1 mg/ml BSA, and 0.05% sodium azide. Store at -20°C. Do not aliquot. Stable for 1 year.

Specificity:

The antibody detects a 125 kDa* protein on SDS-PAGE immunoblots of human HUVEC, A431, and mouse SYF cell lysates.

*All molecular weights (MW) are confirmed by comparison to Bio-Rad Rainbow Markers and to western blot mobilities of known proteins with similar MW.

www.ecmbiosciences.com
telephone: 859-879-2075
toll-free: 1-800-859-8202
tech: info@ecmbiosciences.com

ECMBiosciences

Rev 7/22/2008