

EGFR (a.a. 961-972)

Cat. # EP1871

Host Rabbit Polyclonal

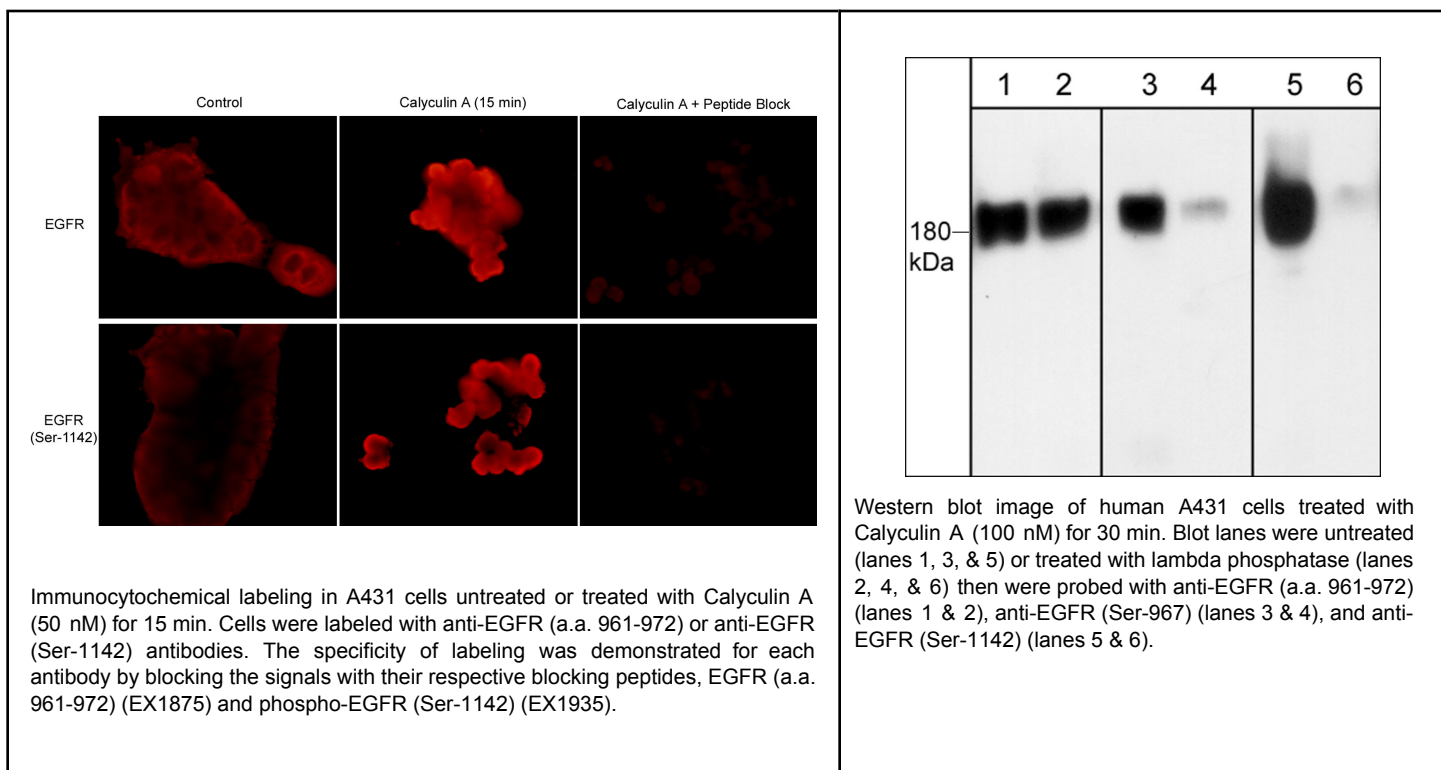
Size 100 µl

Background:

The epidermal growth factor receptor (EGFR) is a transmembrane glycoprotein with an extracellular ligand-binding domain and a cytoplasmic domain with intrinsic tyrosine kinase activity. The cytoplasmic domain has a C-terminal region with multiple autophosphorylation sites (Tyr-992, 1068, 1086, 1148, and 1173). These sites are important for downstream signaling and rapid internalization. In addition, EGFR activation leads to c-Src mediated phosphorylation of Tyr-845 and Tyr-1101. The former site is required for mitogenic responses to EGFR activation, while the latter may be an SH2 binding site. Phosphorylation of EGFR on serine and threonine residues is thought to represent a mechanism for regulation of receptor kinase activity and internalization. These sites include a PKC site (Thr-654), CAMKII sites (Ser-1046, 1047, 1057, and 1142), and constitutively phosphorylated sites (Ser-967 and Ser-1002). Thus, the regulation of EGFR activity involves a complex series of phosphorylation events at multiple sites throughout the intracellular portion of the receptor.

References

- Carpenter, G. (2000) Bioessays 22:697.
Boeri Erba, E. et al. (2005) Mol. Cell. Prot. 4:1107.



FOR RESEARCH USE ONLY. NOT FOR DIAGNOSTIC OR THERAPEUTIC USE.

www.ecmbiosciences.com
telephone: 859-879-2075
toll-free: 1-800-859-8202
tech: info@ecmbiosciences.com

ECMBiosciences

Rev 8/1/2007

EGFR (a.a. 961-972)

Cat. # EP1871

Host Rabbit Polyclonal

Size 100 µl

Immunogen:

EGFR synthetic peptide (coupled to KLH) corresponding to amino acid residues a.a. 961-972 of human EGFR (ErbB-1). This human EGFR sequence has high homology to rat and mouse EGFR, and low homology to other ErbB family members.

Buffer and Storage:

Rabbit polyclonal, affinity-purified antibody is supplied in 100µl phosphate-buffered saline, 50% glycerol, 1 mg/ml BSA, and 0.05% sodium azide. Store at -20°C. Do not aliquot. Stable for 1 year.

Applications:

WB 1:1,000

ELISA 1:2,000

ICC 1:200

End user should determine optimal dilution for their particular applications and experiments.
Western blot membranes were incubated with diluted antibody in 5% non-fat milk, PBS, 0.04% Tween20 for 1hour at room temperature.

Specificity:

This antibody was affinity purified using EGFR (a.a. 961-972) peptide (without carrier). The antibody detects a 180 kDa* protein on SDS-PAGE immunoblots of human A431 cells.

*All molecular weights (MW) are confirmed by comparison to Bio-Rad Rainbow Markers and to western blot mobilities of known proteins with similar MW.

Related Products:

EM1991 EGFR (Tyr-1101), phospho-specific Mouse Monoclonal

EP1911 EGFR (Ser-967), phospho-specific Rabbit Polyclonal

EP1931 EGFR (Ser-1142), phospho-specific Rabbit Polyclonal

EX1875 EGFR (a.a. 961-972) Peptide

AL9001 A431 Calyculin A Ctrl Lysate

AL9101 A431 + Calyculin A (30min) Lysate

FOR RESEARCH USE ONLY. NOT FOR DIAGNOSTIC OR THERAPEUTIC USE.

www.ecmbiosciences.com
telephone: 859-879-2075
toll-free: 1-800-859-8202
tech: info@ecmbiosciences.com

ECMBiosciences

Rev 8/1/2007