

Early Endosome Antigen 1 (EEA1)

Cat. # EM3471

Host Mouse Monoclonal IgG1

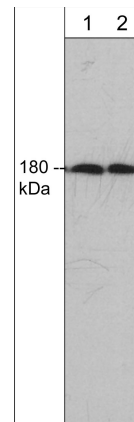
Size 100 µl

Background:

Early endosomes are cellular compartments that receive endocytosed materials and sort them for vesicular transport to late endosomes and lysosomes, as well as for recycling material to the plasma membrane. Early endosome antigen 1 (EEA1) is an early endosomal protein that contains an N-terminal zinc finger motif, a cys-rich C-terminal metal-binding finger, and multiple sites for N-glycosylation, phosphorylation, and N-myristoylation. Expression of EEA1 mRNA is observed in skeletal muscle, heart, brain, lung, liver, and pancreas. Immunoblot analysis shows that EEA1 is a 180-kDa protein localized in membrane and cytosolic fractions. Immunofluorescence microscopy shows that EEA1 colocalizes with transferrin and with RAB5 in early endosomes, but not with RAB7 in late endosomes.

References

- Mu, F.T. et al. (1995) J. Biol. Chem. 270:13503.
 Simonsen, A. et al. (1998) Nature 394:494.
 Dumas, J.J. et al. (2001) Mol. Cell 8:947.



Western blot of adult mouse brain tissue lysate. The blot was probed with mouse monoclonal anti-EEA1 antibody at 1:500 (lane 1) or 1:1000 (lane 2).

Immunogen:

Clone M347 was generated from a recombinant protein corresponding to amino acid residues in the N-terminal region of human EEA1. This sequence has high homology to similar regions in rat and mouse EEA1.

Applications:

WB	1:1000
ELISA	1:2000
ICC	1:50

End user should determine optimal dilution for their particular applications and experiments. Western blot membranes were incubated with diluted antibody in 5% non-fat milk, PBS, 0.04% Tween20 for 1 hour at room temperature.

Related Products:

- CM2811 Caveolin-1 Mouse Monoclonal
 CM2831 Caveolin-1 (Tyr-14), phospho-specific Mouse Monoclonal
 GM3421 GM130 (C-terminal region) Mouse Monoclonal
 AK6060 Actin & Tubulin Antibody Sampler Kit
 AM2981 Annexin A2 (C-terminal region) Mouse Monoclonal
 AM3301 Annexin A6 Mouse Monoclonal

Buffer and Storage:

Mouse monoclonal purified with protein A chromatography is supplied in 100µl phosphate-buffered saline, 50% glycerol, 1 mg/ml BSA, and 0.05% sodium azide. Store at -20°C. Do not aliquot. Stable for 1 year.

Specificity:

This antibody detects a 180 kDa* protein corresponding to the apparent molecular mass of EEA1 on SDS-PAGE immunoblots of adult mouse brain. In immunocytochemistry, anti-EEA1 specifically stains endosomal vesicles.

*All molecular weights (MW) are confirmed by comparison to Bio-Rad Rainbow Markers and to western blot mobilities of known proteins with similar MW.

FOR RESEARCH USE ONLY. NOT FOR DIAGNOSTIC OR THERAPEUTIC USE.

web: www.ecmbiosciences.com

telephone: 859-879-2075

email: info@ecmbiosciences.com

toll-free: 1-800-859-8202

ECMBiosciences