

Draxin (C-terminal region)

Cat. # DP3671

Host Rabbit Polyclonal

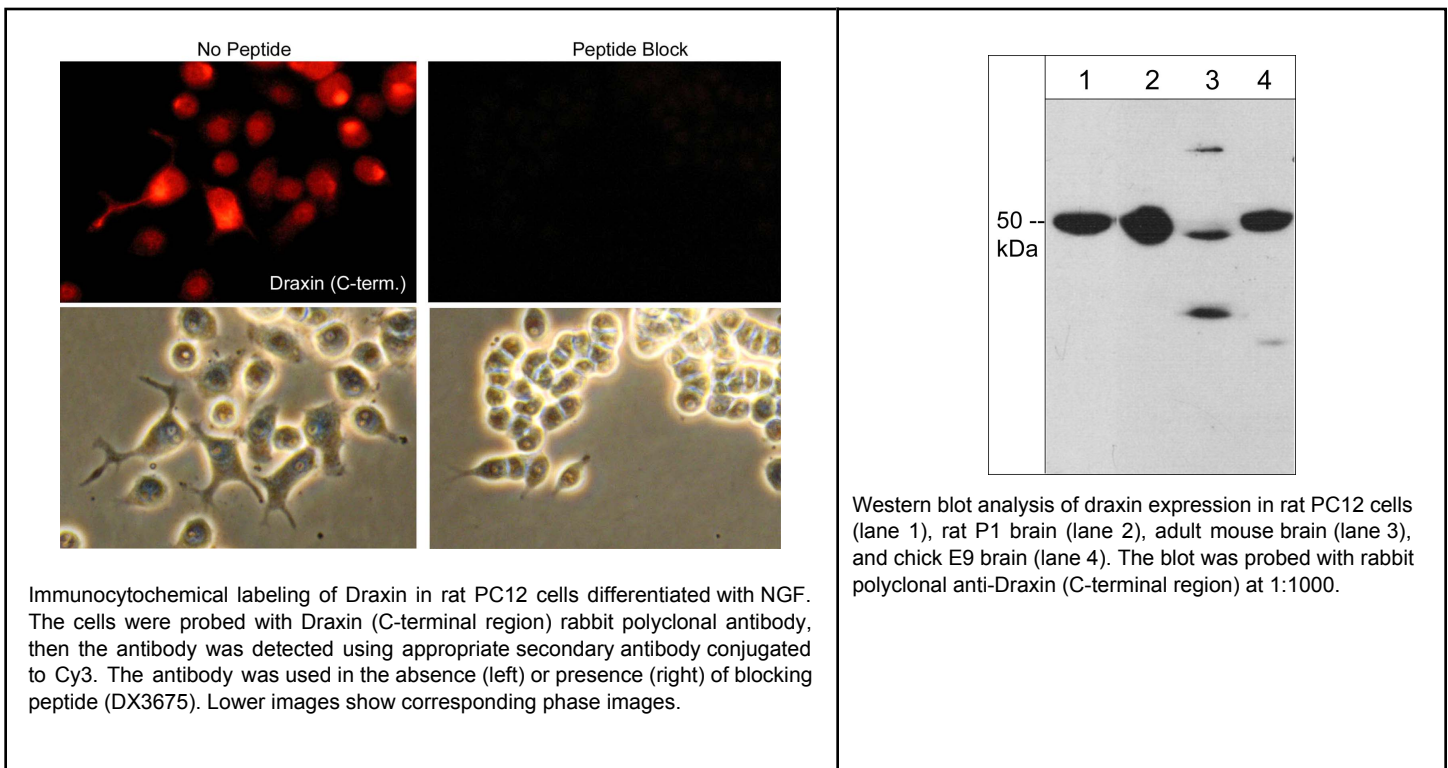
Size 100 µl

Background:

The developing nervous system assembles with the help of guidance molecules that control the trajectory of growing neurons. Axon guidance proteins such as, netrins, semaphorins, ephrins, and slits, are critical extracellular matrix cues for correctly wiring of the nervous system. Draxin is an axon guidance protein that has been observed to repel neurite outgrowth from dorsal spinal cord and cortical explants *in vitro*. Chick draxin consists of 349 amino acids with a putative signal peptide sequence at the N-terminal end but no membrane anchoring sequence, which suggests that draxin is a secreted protein. The ectopically expressed draxin has been shown to inhibit growth or cause misrouting of chick spinal cord commissural axons *in vivo*. In both chick and mouse, commissural neurons require draxin to successfully cross the midline and form the major commissures of the brain. Thus, draxin is a chemorepulsive axon guidance molecule required for the development of the spinal cord and forebrain commissures.

References

Islam, S. M. et al. (2009) Science 323(5912):388.
Hines, P. J. (2009) Sci. Signal. 2(54):ec23.



FOR RESEARCH USE ONLY. NOT FOR DIAGNOSTIC OR THERAPEUTIC USE.

web: www.ecmbiosciences.com

telephone: 859-879-2075

email: info@ecmbiosciences.com

toll-free: 1-800-859-8202



Draxin (C-terminal region)

Cat. # DP3671

Host Rabbit Polyclonal

Size 100 µl

Immunogen:

Draxin synthetic peptide (coupled to KLH) corresponding to amino acid residues in the C-terminal region of human draxin. This peptide sequence is highly conserved in rat, mouse, and chick draxin.

Buffer and Storage:

Rabbit polyclonal, affinity-purified antibody is supplied in 100µl phosphate-buffered saline, 50% glycerol, 1 mg/ml BSA, and 0.05% sodium azide. Store at -20°C. Do not aliquot. Stable for 1 year.

Applications:

WB 1:1000

ELISA 1:2000

ICC 1:100

End user should determine optimal dilution for their particular applications and experiments.
Western blot membranes were incubated with diluted antibody in 5% non-fat milk, PBS, 0.04% Tween20 for 1hour at room temperature.

Specificity:

This antibody was affinity purified using Draxin (C-terminal region) peptide (without carrier). The antibody detects a significant 50 kDa* protein corresponding to the molecular mass of draxin on SDS-PAGE immunoblots of rat PC12 cells, rat P1 brain, and chick E9 brain. The antibody also shows low expression of draxin in adult mouse brain.

*All molecular weights (MW) are confirmed by comparison to Bio-Rad Rainbow Markers and to western blot mobilities of known proteins with similar MW.

Related Products:

SK6190 Sema-3A and NRP1/Plexin A1 Receptor Antibody Sampler Kit

EK6220 EphA4 Receptor Activation Antibody Sampler Kit

SK6240 Sema-4D and Plexin B1 Receptor Antibody Sampler Kit

RK6100 Robo1 & Robo2 Antibody Sampler Kit

NM3641 Nogo A (Central region) Mouse Monoclonal

PL7091 PC12 Control Lysate

FOR RESEARCH USE ONLY. NOT FOR DIAGNOSTIC OR THERAPEUTIC USE.

web: www.ecmbiosciences.com

telephone: 859-879-2075

email: info@ecmbiosciences.com

toll-free: 1-800-859-8202

ECMBiosciences