

phospho-Cofilin 1 (Ser-3) Blocking Peptide

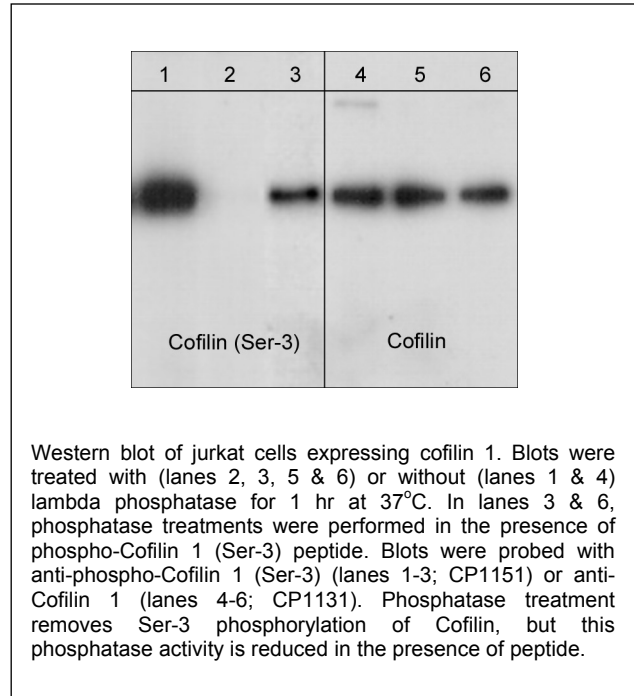
Cat. # **CX1155**
Size **50 µg**

Background:

Members of the ADF/cofilin (AC) family are actin-severing proteins that regulate actin remodeling during cellular events such as cell migration, cytokinesis, phagocytosis, endocytosis, axon development, and immune cell activation. In mammals, there are three members of the AC family, muscle-specific cofilin (Cofilin 2), non-muscle cofilin (Cofilin 1), and ADF. In humans, cofilin 1 and ADF have 72% identity, with the major amino acid differences found in the C-terminal region. Regulation of cofilin activity can occur through serine phosphorylation. Activation of cofilin kinases, LIMK1 or LIMK2, leads to phosphorylation of cofilin at serine 3. This phosphorylation disrupts cofilin binding to actin *in vitro* and *in vivo*. Multiple phosphatases, PP1, PP2A, PP2B, slingshot, and chronophin can dephosphorylate Ser-3 and activate actin binding. Thus, Ser-3 phosphorylation is a major site for the regulation of cofilin activity.

References:

Bamburg, J.R. (1999). *Annu Rev Cell Dev Biol.* 15:185
Maciver, S.K. & Hussey, P.J. (2002). *Genome Biol.* 3(5): 3007



Peptide Sequence:

Phospho-Cofilin 1 (Ser-3) synthetic peptide corresponds to amino acid residues around serine 3 of human Cofilin 1. This peptide sequence has 100% homology with similar regions of rat and mouse Cofilin 1, and has two amino acid differences from human Cofilin 2.

Buffer and Storage:

Blocking Peptide is supplied in 50µl phosphate-buffered saline and 0.05% sodium azide. Store at -20°C. Stable for 1 year.

Applications:

Antibody Blocking 1 µg/ml¹
ELISA 10-100 ng/well²

End user should determine optimal concentration dependent on the concentration of the antibody.

¹Recommended for blocking antibody reactivity in Western blot and immunocytochemistry.

²Established in 96-well Nunc immunoplates where peptide was bound to plates for 2 hrs in 0.1 M sodium carbonate buffer, pH 8.5.

Specificity:

The peptide is specifically recognized by Cofilin 1 (Ser-3) phospho-specific antibody (CP1151) in ELISA, and has been shown to block the reactivity of CP1151 during Western blot. In addition, the peptide is recommended for use in blocking CP1151 reactivity in immunocytochemistry.

Related Products:

CP1131 Cofilin 1 (N-terminus) Rabbit Polyclonal CX1135 Cofilin 1 (N-terminus) Peptide
CP1151 Cofilin 1 (Ser-3), phospho-specific Rabbit Polyclonal

FOR RESEARCH USE ONLY. NOT FOR DIAGNOSTIC OR THERAPEUTIC USE.

www.ecmbiosciences.com
telephone: 859-879-2075
toll-free: 1-800-859-8202
tech: info@ecmbiosciences.com

ECMBiosciences