

# Caspase-7 (N-terminal region)

Cat. # CM3811

Host Mouse Monoclonal IgG1

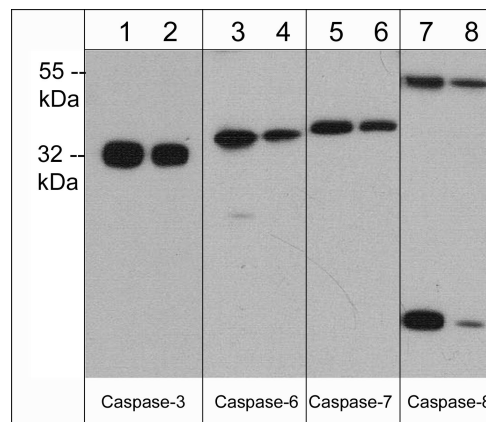
Size 100 µl

## Background:

The caspases are a group of cysteine enzymes, which cleave proteins in response to intrinsic and extrinsic pathways that cause apoptotic cell death. The caspases can be grouped into two subgroups based on their roles in apoptosis. Initiator caspases (caspases 2, 8, 9, and 10) are activated through the apoptosis-signaling pathways and activate the effector caspases (caspases 3, 6, and 7) which carry out apoptosis. Caspase cascades are initiated through assembly of multiprotein complexes that trigger activation of the initiator caspases, which are then released and are able to activate the downstream effector caspases.

## References

- Salvesen, G.S. & Riedl S.J. (2008) *Adv Exp Med Biol.* 615:13.  
 Adams, J.M. & Cory S. (2002) *Curr Opin Cell Biol.* 14(6):715.  
 Shi Y. (2002) *Mol Cell.* 9(3):459.



Western blot analysis of Caspase expression in human Jurkat cells. The blot was probed with anti-Caspase-3 at 1:500 (lane 1) and 1:1000 (lane 2), anti-Caspase-6 at 1:250 (lane 3) and 1:500 (lane 4), anti-Caspase-7 at 1:500 (lane 5) and 1:1000 (lane 6), as well as anti-Caspase-8 at 1:250 (lane 7) and 1:500 (lane 8).

## Immunogen:

Clone (M381) was generated from a recombinant protein containing amino acid residues in the N-terminal region of human Caspase-7. This sequence is well conserved in rat and mouse Caspase-7

## Applications:

WB	1:1000
ELISA	1:2000
ICC	1:100

End user should determine optimal dilution for their particular applications and experiments. Western blot membranes were incubated with diluted antibody in 5% non-fat milk, PBS, 0.04% Tween20 for 1 hour at room temperature.

## Related Products:

- CM3771 Caspase-3 (N-terminal region) Mouse Monoclonal  
 CM3781 Caspase-6 (C-terminal region) Mouse Monoclonal  
 CM3821 Caspase-8 (C-terminal region) Mouse Monoclonal  
 CK6360 Caspase Family Antibody Sampler Kit  
 SM3591 Smac/DIABLO (C-terminal region) Mouse Monoclonal  
 TM3391 TRADD (C-terminal region) Mouse Monoclonal

FOR RESEARCH USE ONLY. NOT FOR DIAGNOSTIC OR THERAPEUTIC USE.

## Buffer and Storage:

Mouse monoclonal antibody purified with protein A chromatography is supplied in 100µl phosphate-buffered saline, 50% glycerol, 1 mg/ml BSA, and 0.05% sodium azide. Store at -20°C. Do not aliquot. Stable for 1 year.

## Specificity:

The antibody detects a 35 kDa\* protein corresponding to the molecular weight of Caspase-7 on SDS-PAGE immunoblots of human Jurkat and K562 cells.

\*All molecular weights (MW) are confirmed by comparison to Bio-Rad Rainbow Markers and to western blot mobilities of known proteins with similar MW.

web: [www.ecmbiosciences.com](http://www.ecmbiosciences.com)

telephone: 859-879-2075

email: [info@ecmbiosciences.com](mailto:info@ecmbiosciences.com)

toll-free: 1-800-859-8202