

# Crk (C-terminal region)

Cat. # CM3321

Host Mouse Monoclonal IgG1

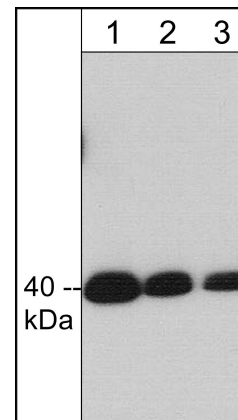
Size 100 µl

## Background:

Crk and Grb2 family adaptor proteins are involved in a variety of cell signaling pathways related to human diseases. These adaptors have Src homology 2 (SH2) and Src homology 3 (SH3) domains, which are docking sites for several signaling proteins, including receptors, kinases, and GTPase regulators. In addition, other protein-protein interactions may also utilize Crk and Grb2 domain interactions to modulate cell signaling pathways. The DOCK family of proteins (DOCK3, DOCK4, and DOCK5) can interact with Crk and may be important Crk effector proteins. The cell cycle regulator p27Kip1 can interact with Grb2, and this implicates Grb2 activity in cell signaling pathways that alter cell cycle progression.

## References

Feller, S.M. & Lewitzky, M. (2006) *Curr. Pharm. Des.* 12(5):529.



Western blot of human Jurkat cell lysate. The blot was probed with mouse monoclonal anti-Crk (C-terminal region) antibody at 1:250 (lane 1), 1:500 (lane 2), or 1:1000 (lane 3).

## Immunogen:

Clone (M332) was generated from a recombinant sequence containing the C-terminal half of mouse Crk. This sequence has high homology to human and rat Crk.

## Applications:

WB 1:1000  
ELISA 1:2000  
IP 1:50

End user should determine optimal dilution for their particular applications and experiments. Western blot membranes were incubated with diluted antibody in 5% non-fat milk, PBS, 0.04% Tween20 for 1 hour at room temperature.

## Related Products:

GM3311 Grb2 Mouse Monoclonal  
IM1261 Integrin b4 (Cytoplasmic Region) Mouse Monoclonal  
IP1281 Integrin b4 (Tyr-1494), phospho-specific Rabbit Polyclonal  
PK6070 Paxillin Phospho-Regulation Antibody Sampler Kit  
DP2181 Dok1 (Ser-450), phospho-specific Rabbit Polyclonal  
DP2241 Dok1 (Tyr-362), phospho-specific [Conserved site] Rabbit Polyclonal

FOR RESEARCH USE ONLY. NOT FOR DIAGNOSTIC OR THERAPEUTIC USE.

## Buffer and Storage:

Mouse monoclonal, protein A purified antibody is supplied in 100µl phosphate-buffered saline, 50% glycerol, 1 mg/ml BSA, and 0.05% sodium azide. Store at -20°C. Do not aliquot. Stable for 1 year.

## Specificity:

This antibody detects a 40 kDa\* protein corresponding to the molecular mass of Crk on SDS-PAGE immunoblots of rat PC12 and human Jurkat cells.

\*All molecular weights (MW) are confirmed by comparison to Bio-Rad Rainbow Markers and to western blot mobilities of known proteins with similar MW.

web: [www.ecmbiosciences.com](http://www.ecmbiosciences.com)

telephone: 859-879-2075

email: [info@ecmbiosciences.com](mailto:info@ecmbiosciences.com)

toll-free: 1-800-859-8202

**ECM**Biosciences