

Anti-c-Cbl (Tyr-700), phospho-specific

Cat. # **CM1611**
Host **Mouse Monoclonal IgG1**
Size **100µl**

Background:

c-Cbl proto-oncogene is a ubiquitously expressed cytoplasmic adaptor protein that is especially predominant in hematopoietic cells. c-Cbl possesses a highly conserved amino-terminal phosphotyrosine binding domain and a C3HC4 RING finger motif. c-Cbl is rapidly tyrosine phosphorylated in response to stimulation of a variety of cell-surface receptors and becomes associated with a number of intracellular signaling molecules such as protein tyrosine kinases, phosphatidylinositol 3 kinase (PI3K), Crk and 14-3-3 proteins. In human cancer tissues, c-Cbl is frequently tyrosine phosphorylated in a tumor-specific manner. Src-family kinases primarily phosphorylate c-Cbl at Tyr-700, Tyr-731, and Tyr-774. These sites of phosphorylation provide docking sites for downstream signaling components, such as Grb-2, PI3K, and Fyn.

References:

Blake, T. J. et al. (1991) *Oncogene* 6:653.
Donovan, J.A., et al. (1994) *J. Biol. Chem.* 269:37.
Rivero-Lezcano, O.M. et al. (1994) *J. Biol. Chem.* 269:26.
Christine, B. F. et al. (2001) *Nat. Rev. Mol. Cell Biol.* 2:294.

Immunogen:

Clone (M161) was generated from a synthetic peptide (coupled to KLH) corresponding to amino acid residues surrounding tyrosine 700 in human c-Cbl. This sequence is highly conserved in rat and mouse c-Cbl.

Buffer and Storage:

Mouse monoclonal antibody purified with protein A chromatography is supplied in 100µl phosphate-buffered saline, 50% glycerol, 1 mg/ml BSA, and 0.05% sodium azide. Store at -20°C. Do not aliquot. Stable for 1 year.

Applications:

Western blotting 1:1000 dilution[†]
ELISA 1:2000 dilution

End user should determine optimal dilution for their particular applications and experiments.

[†]Membrane was incubated with diluted antibody in 5% non-fat milk, PBS, 0.04% Tween20 for 1 hour at room temperature.

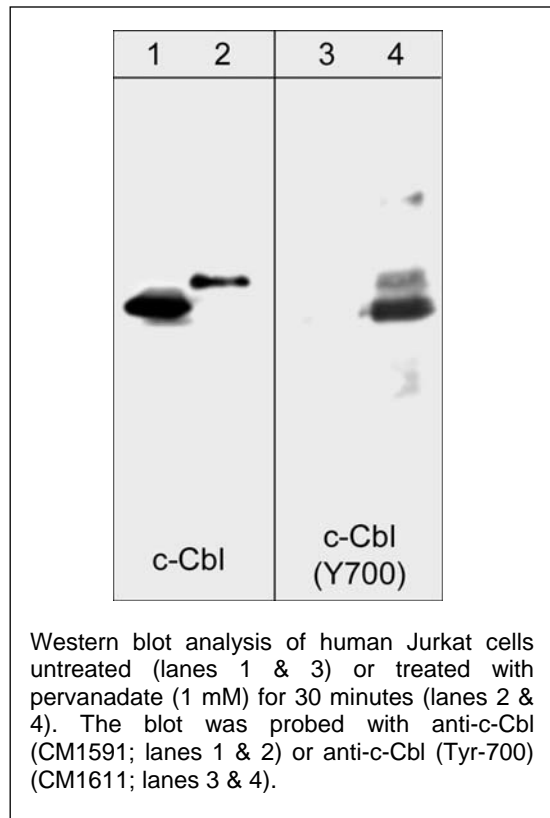
Specificity:

The antibody detects a 120 kDa* protein in human Jurkat cells treated with pervanadate, but not in control cells.

*All molecular weights (MW) are confirmed by comparison to Bio-Rad Rainbow Markers and to western blot mobilities of known proteins with similar MW.

Related Products:

CM1591 c-Cbl (C-terminal Region), Mouse Monoclonal



FOR RESEARCH USE ONLY. NOT FOR DIAGNOSTIC OR THERAPEUTIC USE.

www.ecmbiosciences.com
telephone: 859-879-2075
toll-free: 1-800-859-8202
tech: info@ecmbiosciences.com

ECMBiosciences