

Cdc42

Cat. # CM1521

Host Mouse Monoclonal IgG1

Size 100 µl

Background:

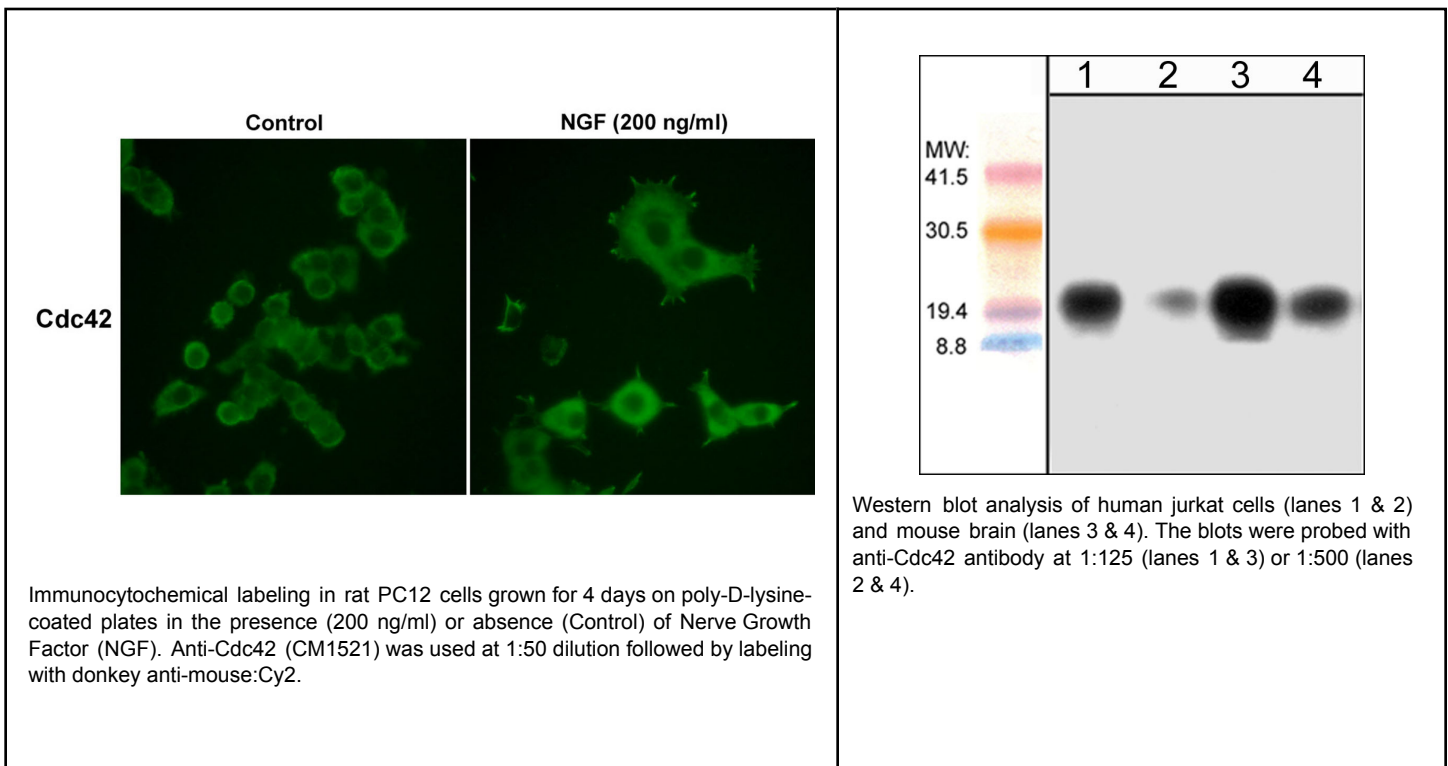
Cdc42 proteins are Rho GTPase family members, which act as molecular switches in regulating a variety of biological response pathways including cell motility, cell-cycle progression, gene transcription, and cell transformation. Cdc42 GTPases regulate molecular events by cycling from the inactive GDP-bound state to active GTP-bound forms. The ratio of GDP versus GTP, which is bound to the GTPase, is determined by the opposing effects of guanine nucleotide exchange factors and GTPase activating proteins. Active (GTP-bound) Cdc42 binds to the p21-binding domain of p21-activated protein kinase 1 (PAK1) to regulate downstream signaling cascades.

References

Munemitsu, S. et al. (1990) Mol. Cell. Biol. 10:5977.

Shinjo, K. et al. (1990) PNAS (USA) 87:9853.

Erickson, J.W. & Cerione, R.A. (2001) Curr. Opin. Cell. Biol. 13(2):153.



FOR RESEARCH USE ONLY. NOT FOR DIAGNOSTIC OR THERAPEUTIC USE.

Cdc42

Cat. # CM1521

Host Mouse Monoclonal IgG1

Size 100 µl

Immunogen:

Clone (M152) was generated from a rat recombinant Cdc42 protein. This sequence is highly conserved in human and mouse Cdc42.

Buffer and Storage:

Mouse monoclonal antibody purified with protein A chromatography is supplied in 100µl phosphate-buffered saline, 50% glycerol, 1 mg/ml BSA, and 0.05% sodium azide. Store at -20°C. Do not aliquot. Stable for 1 year.

Applications:

WB 1:500

ELISA 1:2000

ICC 1:50

End user should determine optimal dilution for their particular applications and experiments.
Western blot membranes were incubated with diluted antibody in 5% non-fat milk, PBS, 0.04% Tween20 for 1hour at room temperature.

Specificity:

The antibody detects a 21 kDa* protein in human Jurkat cells and mouse brain. It does not recognize a human RhoA GST fusion protein.

*All molecular weights (MW) are confirmed by comparison to Bio-Rad Rainbow Markers and to western blot mobilities of known proteins with similar MW.

Related Products:

RP1361 RhoA (Ser-188), phospho-specific Rabbit Polyclonal

RX1365 phospho-RhoA (Ser-188) Peptide

RP1501 Rho (Central Region) Rabbit Polyclonal

FOR RESEARCH USE ONLY. NOT FOR DIAGNOSTIC OR THERAPEUTIC USE.

www.ecmbiosciences.com
telephone: 859-879-2075
toll-free: 1-800-859-8202
tech: info@ecmbiosciences.com

ECMBiosciences

Rev 7/16/2007