

Blasticidin S Deaminase

Cat. # BP1231

Host Rabbit Polyclonal

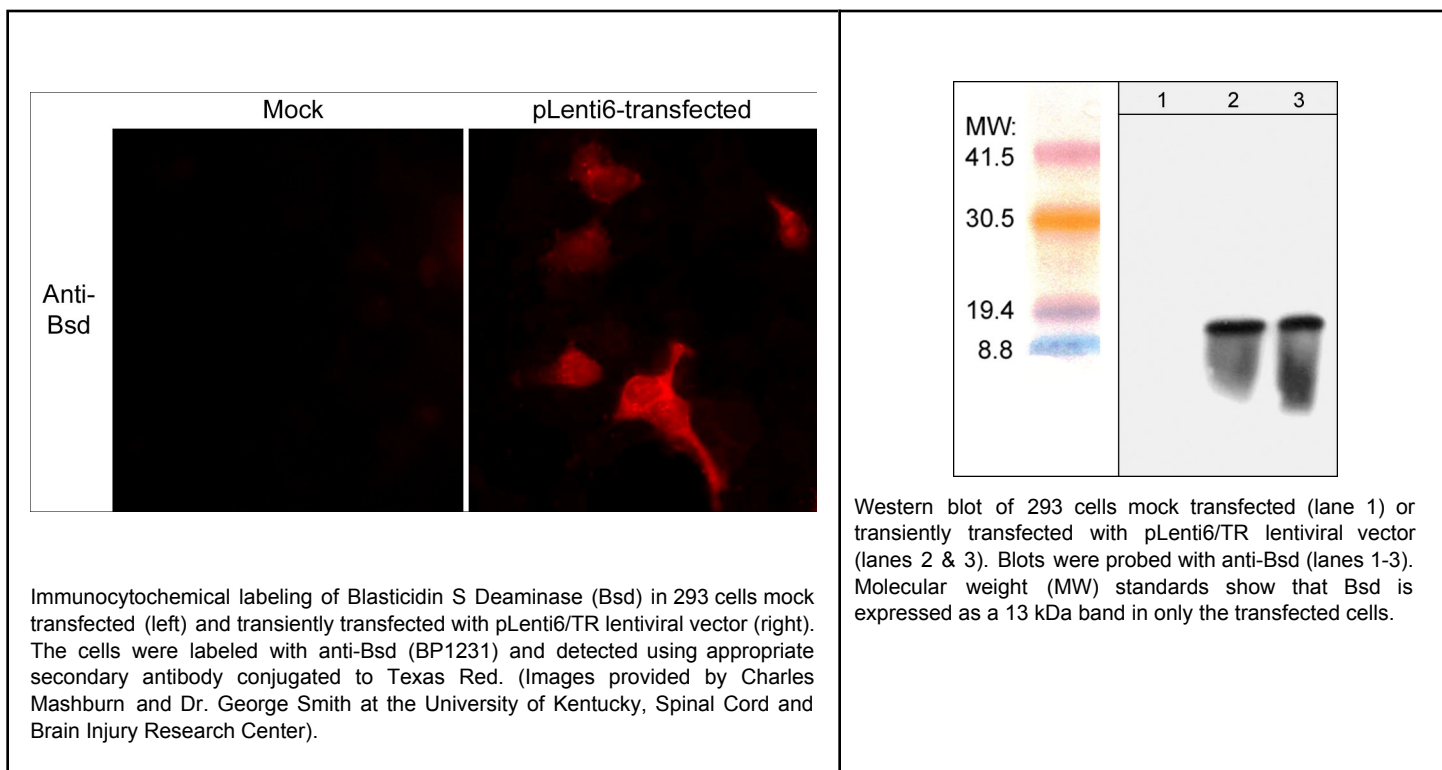
Size 100 µl

Background:

Retroviral vectors are commonly used for gene expression *in vitro* and *in vivo*. The structure of these vectors usually consists of one gene of interest and a selectable marker gene. Fast selection without damaging cells is a critical step for significant gene expression. Blasticidin S deaminase (Bsd) isolated from *Bacillus cereus* has a neutralizing action on the highly toxic antibiotic blasticidin. A variety of commercially available retroviral vectors, such as lentiviral expression systems, utilize Bsd expression for selection using blasticidin. This selectable marker allows selection of stable mammalian cell lines in as little as one week. Catalog# BP1231 is a Bsd antibody that can detect Bsd expression in cells transfected with blasticidin-selectable constructs. This antibody is useful for detection of successful gene transfer in constructs that utilize blasticidin selection.

References

Kimura M, et al. (1994). *Biochim Biophys Acta*. 1219(3):653-9.
Izumi M, et al. (1991). *Exp Cell Res*. 197(2):229-33.



FOR RESEARCH USE ONLY. NOT FOR DIAGNOSTIC OR THERAPEUTIC USE.

www.ecmbiosciences.com
telephone: 859-879-2075
toll-free: 1-800-859-8202
email: info@ecmbiosciences.com

ECMBiosciences

Rev 2/10/2009

Blasticidin S Deaminase

Cat. # BP1231

Host Rabbit Polyclonal

Size 100 µl

Immunogen:

A synthetic peptide (coupled to KLH) corresponding to amino acid residues in the N-terminal region of Blasticidin S Deaminase from *Aspergillus Terrus*.

Buffer and Storage:

Rabbit polyclonal, affinity-purified antibody is supplied in 100µl phosphate-buffered saline, 50% glycerol, 1 mg/ml BSA, and 0.05% sodium azide. Store at -20°C. Do not aliquot. Stable for 1 year.

Applications:

WB 1:1000

ELISA 1:2000

ICC 1:100

End user should determine optimal dilution for their particular applications and experiments.
Western blot membranes were incubated with diluted antibody in 5% non-fat milk, PBS, 0.04% Tween20 for 1hour at room temperature.

Specificity:

This antibody was affinity purified using the N-terminal Bsd peptide (without carrier). The antibody detects a 13 kDa* protein corresponding to the molecular mass of Bsd on SDS-PAGE immunoblots of 293 cells transfected with a lentiviral vector that expresses the Bsd gene product, but is not detected in mock transfected cells.

*All molecular weights (MW) are confirmed by comparison to Bio-Rad Rainbow Markers and to western blot mobilities of known proteins with similar MW.

Related Products:

BX1235 Blasticidin S Deaminase Peptide

FOR RESEARCH USE ONLY. NOT FOR DIAGNOSTIC OR THERAPEUTIC USE.

www.ecmbiosciences.com
telephone: 859-879-2075
toll-free: 1-800-859-8202
email: info@ecmbiosciences.com

ECMBiosciences

Rev 2/10/2009