

phospho-c-Abl (Tyr-412) Blocking Peptide

Cat. # AX1275

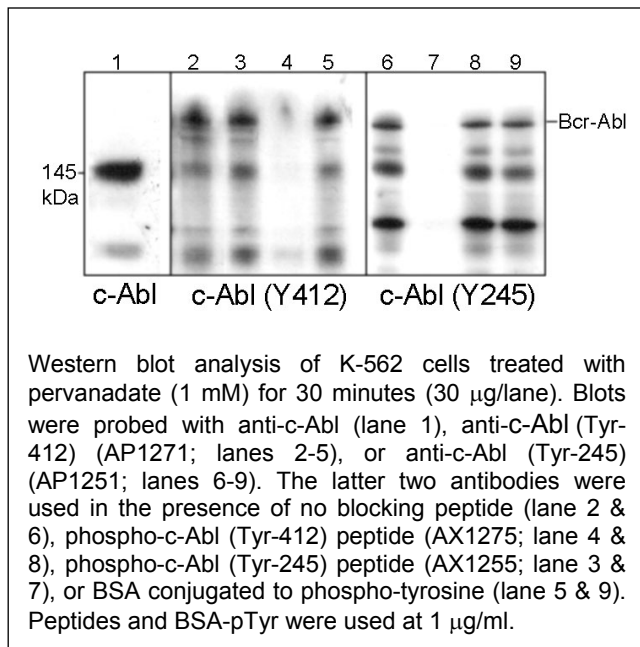
Size 50 µg

Background:

The c-Abl proto-oncogene encodes a nonreceptor type protein tyrosine kinase that is widely expressed and is distributed in both the nucleus and the cytoplasm of cells. It has been implicated in regulation of cell proliferation, differentiation, apoptosis, cell adhesion, and stress response. A variety of stimuli activate c-Abl kinase including integrin activation, PDGF stimulation, and binding to proteins, such as c-Jun. Tyrosine phosphorylation is important for the regulation of c-Abl kinase activity. Tyrosine 245 is located in the linker region between the SH2 and catalytic domains. Phosphorylation of Tyr-245 is involved in activation of c-Abl kinase activity. Tyrosine 412 is located in the kinase activation loop of c-Abl, and phosphorylation of this residue is required for kinase activity. Thus, phosphorylation of Tyr-245 and Tyr-412 may be critical for activation of c-Abl in a variety of cell signaling pathways.

References:

Brasher, B.B. et al. (2000) J. Biol. Chem. 275:35631.
Pluk, H. et al. (2002) Cell 108:247.
Van Etten, R.A. et al. (1999) Trends Cell. Biol. 9:179.



Peptide Sequence:

Phospho-c-Abl (Tyr-412) synthetic peptide corresponds to amino acid residues around tyrosine 412 of human c-Abl. This peptide sequence has high homology to the conserved site in rat and mouse c-Abl, as well as in viral Abl and BCR-Abl fusion protein.

Buffer and Storage:

Blocking Peptide is supplied in 50µl phosphate-buffered saline and 0.05% sodium azide. Store at -20°C. Stable for 1 year.

Applications:

Antibody Blocking 1 µg/ml¹
ELISA 10-100 ng/well²

End user should determine optimal concentration dependent on the concentration of the antibody.

¹Recommended for blocking antibody reactivity in Western blot and immunocytochemistry.

²Established in 96-well Nunc immunoplates where peptide was bound to plates for 2 hrs in 0.1 M sodium carbonate buffer, pH 8.5.

Specificity:

The peptide is specifically recognized by anti-c-Abl (Tyr-412) phospho-specific antibody (AP1271) in ELISA, and has been used to block the reactivity of AP1271 during Western blot. In addition, the peptide is recommended for use in blocking AP1271 reactivity in immunocytochemistry.

Related Products:

AP1251 c-Abl (Tyr-245), phospho-specific Rabbit Polyclonal
AP1271 c-Abl (Tyr-412), phospho-specific Rabbit Polyclonal

AX1255 phospho-c-Abl (Tyr-245) Peptide

FOR RESEARCH USE ONLY. NOT FOR DIAGNOSTIC OR THERAPEUTIC USE.

www.ecmbiosciences.com
telephone: 859-879-2075
toll-free: 1-800-859-8202
tech: info@ecmbiosciences.com

ECMBiosciences