

Amphiphysin (Central region)

Cat. # AM3581

Host Mouse Monoclonal IgG1

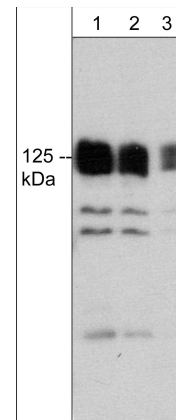
Size 100 µl

Background:

Amphiphysin is associated with the cytoplasmic surface of synaptic vesicles. A subset of patients with stiff man syndrome who were also affected by breast cancer are positive for autoantibodies against this protein. Alternate splicing of this gene results in two transcript variants (Amphiphysin 1 and Amphiphysin 2) encoding different isoforms. Additional splice variants have been described, but their full length sequences have not been determined. Amphiphysin interacts with several proteins important in the synaptic vesicle cycle. Amphiphysin contains a Src homology 3 (SH3) domain that binds to the C-terminal and proline-rich region of dynamin at the synapse. Microinjection of amphiphysin inhibits synaptic vesicle endocytosis. In addition, amphiphysin binds to AP-2 at the plasma membrane and to the inositol 5-phosphatase, synaptojanin.

References

- Lichte, B. et al. (1992) EMBO J. 11(7):2521.
De Camilli, P. et al. (1993) J Exp Med. 178(6):2219.



Western blot of adult mouse brain lysate. The blot was probed with mouse monoclonal anti-Amphiphysin (Central region) antibody at 1:500 (lane 1), 1:1000 (lane 2), or 1:2000 (lane 3).

Immunogen:

Amphiphysin antibody was generated from a sequence corresponding to amino acids in the central region of human amphiphysin. This sequence has high homology to mouse and rat amphiphysin.

Applications:

WB	1:1000
ELISA	1:2000
IHC	1:100

End user should determine optimal dilution for their particular applications and experiments. Western blot membranes were incubated with diluted antibody in 5% non-fat milk, PBS, 0.04% Tween20 for 1 hour at room temperature.

Related Products:

- SM3651 Synapsin I (C-terminal region) Mouse Monoclonal
SM3691 Shank1 (C-terminal region) Mouse Monoclonal
SM3711 Syntaphilin (N-terminal region) Mouse Monoclonal
RM3701 Rabphilin 3A (N-terminal region) Mouse Monoclonal
AK6060 Actin & Tubulin Antibody Sampler Kit
BL7011 Mouse Brain Lysate

FOR RESEARCH USE ONLY. NOT FOR DIAGNOSTIC OR THERAPEUTIC USE.

Buffer and Storage:

Mouse monoclonal, protein A purified antibody is supplied in 100µl phosphate-buffered saline, 50% glycerol, 1 mg/ml BSA, and 0.05% sodium azide. Store at -20°C. Do not aliquot. Stable for 1 year.

Specificity:

This antibody detects a 125 kDa* protein corresponding to the molecular mass of Amphiphysin on SDS-PAGE immunoblots of adult mouse brain.

*All molecular weights (MW) are confirmed by comparison to Bio-Rad Rainbow Markers and to western blot mobilities of known proteins with similar MW.

web: www.ecmbiosciences.com

telephone: 859-879-2075

email: info@ecmbiosciences.com

toll-free: 1-800-859-8202