

## Abp1 (C-terminal region)

Cat. # AM3341

Host Mouse Monoclonal IgG1

Size 100 µl

### Background:

Cellular morphology, adhesion, and motility occur through dynamic reorganization of actin-based superstructures. Actin-binding proteins are critical for regulating actin polymerization and superstructure formation. The Arp2/3 complex is an actin polymerization-inducing complex that includes Arp2, Arp3, p41-Arc, p34-Arc, p21-Arc, p20 Arc, and p16-Arc. Several actin binding proteins, WASP, cortactin, and Abp1, regulate the activity of the Arp2/3 complex. Abp1 (SH3P7, HIP-55) is the mammalian homologue of the yeast Abp1p, which has been shown to bind actin and to have roles in endocytosis. Abp1 contains a C-terminal Src homology 3 domain and an N-terminal actin depolymerization factor (ADF-H/C) domain that is homologous to a similar domain found in the actin severing protein, cofilin. Abp1 can bind Src kinases, hematopoietic progenitor kinase 1 (HPK-1), myosin I heavy chain kinase, and dynamin. Thus, Abp1 may be important for regulation of the actin cytoskeleton through its ability to interact with F-actin and various other cytoskeletal and cell signaling proteins.

### References

- Kessels, M.M. et al. (2001) *J Cell Biol.* 153(2):351.  
 Larbolette, O. et al. (1999) *Mol Cell Biol.* 19(2):1539.  
 Olazabal, I.M. & Machesky, L.M. (2001) *J Cell Biol.* 154(4):679.

### Immunogen:

Clone (M334) was generated from a recombinant sequence that included amino acids in the C-terminal region of human Abp1.

### Applications:

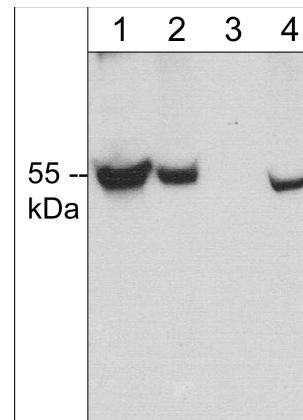
WB 1:1000  
 ELISA 1:2000

End user should determine optimal dilution for their particular applications and experiments. Western blot membranes were incubated with diluted antibody in 5% non-fat milk, PBS, 0.04% Tween20 for 1 hour at room temperature.

### Related Products:

- AK6060 Actin & Tubulin Antibody Sampler Kit  
 AP1671 Actin (Tyr-53), phospho-specific Rabbit Polyclonal  
 CK6040 Cofilin Phospho-Regulation Antibody Sampler Kit  
 CP1151 Cofilin 1 (Ser-3), phospho-specific Rabbit Polyclonal  
 WP2201 N-WASP (Ser-484/Ser-485), phospho-specific Rabbit Polyclonal  
 WP2601 N-WASP (Tyr-256), phospho-specific Rabbit Polyclonal

FOR RESEARCH USE ONLY. NOT FOR DIAGNOSTIC OR THERAPEUTIC USE.



Western blot of Jurkat (lane 1), HeLa (lane 2), mouse brain (lane 3), and A431 (lane 4). The blot was probed with mouse monoclonal anti-Abp1 (C-terminal region) antibody at 1:500.

### Buffer and Storage:

Mouse monoclonal, protein A purified antibody is supplied in 100µl phosphate-buffered saline, 50% glycerol, 1 mg/ml BSA, and 0.05% sodium azide. Store at -20°C. Do not aliquot. Stable for 1 year.

### Specificity:

This antibody detects a 55 kDa\* protein corresponding to the molecular mass of Abp1 on SDS-PAGE immunoblots of human Jurkat, HeLa, and A431 cells, but does not detect Abp1 in mouse brain.

\*All molecular weights (MW) are confirmed by comparison to Bio-Rad Rainbow Markers and to western blot mobilities of known proteins with similar MW.

web: [www.ecmbiosciences.com](http://www.ecmbiosciences.com)

telephone: 859-879-2075

email: [info@ecmbiosciences.com](mailto:info@ecmbiosciences.com)

toll-free: 1-800-859-8202

**ECM**Biosciences