

Annexin A6

Cat. # AM3301

Host Mouse Monoclonal IgG1

Size 100 µl

Background:

The Annexin family of calcium-binding proteins is composed of at least thirteen mammalian genes (Annexin A1-13). These proteins are characterized by a conserved core domain which binds to phospholipids in a Ca^{2+} -dependent manner and a unique amino terminal region which may confer binding specificity. The Annexin family has been implicated as regulators of such diverse processes as ion-flux, endocytosis and exocytosis, and cellular adhesion. Annexin A2 (calpactin I, chromobindin 8, p36, Lipocortin II, PAP-IV, or Protein I) is a cytoskeletal calcium-dependent phospholipid binding protein, which has been shown to be a mediator of corticosteroid activity, a substrate for serine/threonine kinases and growth regulated tyrosine kinases, and may play a role in secretion. Annexin A6 reverses transformation of A431 cells after overexpression, and this effect may involve annexin A6 targeting of p120 RasGAP to the plasma membrane to inactivate Ras.

References

- Zokas, L. & Glenney, J.R. (1987) *J Cell Biol.* 105:2111.
 Feinberg, J.M. et al. (1991) *J Histochem. & Cytochem.* 39:955.
 Grewal, T. & Enrich, C. (2006) *Bioessays* 28(12):1211.

Immunogen:

Clone (M330) was generated from a full length recombinant rat Annexin A6 protein.

Applications:

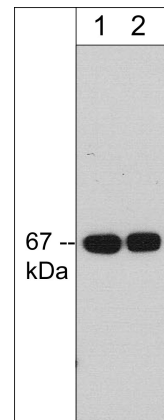
WB 1:1000
 ELISA 1:2000
 IP 1:50

End user should determine optimal dilution for their particular applications and experiments. Western blot membranes were incubated with diluted antibody in 5% non-fat milk, PBS, 0.04% Tween20 for 1 hour at room temperature.

Related Products:

AM2981 Annexin A2 (C-terminal region) Mouse Monoclonal
 RM3351 RasGAP Mouse Monoclonal
 RM3371 Ras Mouse Monoclonal
 CM2811 Caveolin-1 Mouse Monoclonal
 CM2831 Caveolin-1 (Tyr-14), phospho-specific Mouse Monoclonal
 CP2781 Caveolin-1 (N-terminal region) Rabbit Polyclonal

FOR RESEARCH USE ONLY. NOT FOR DIAGNOSTIC OR THERAPEUTIC USE.



Western blot of human Jurkat cell lysate. The blot was probed with mouse monoclonal anti-Annexin A6 antibody at 1:250 (lane 1) or 1:1000 (lane 2).

Buffer and Storage:

Mouse monoclonal, protein A purified antibody is supplied in 100µl phosphate-buffered saline, 50% glycerol, 1 mg/ml BSA, and 0.05% sodium azide. Store at -20°C. Do not aliquot. Stable for 1 year.

Specificity:

This antibody detects a 67 kDa* protein corresponding to the molecular mass of Annexin A6 on SDS-PAGE immunoblots of human Jurkat cells.

*All molecular weights (MW) are confirmed by comparison to Bio-Rad Rainbow Markers and to western blot mobilities of known proteins with similar MW.

 web: www.ecmbiosciences.com

telephone: 859-879-2075

 email: info@ecmbiosciences.com

toll-free: 1-800-859-8202

ECMBiosciences