

Annexin A2 (C-terminal region)

Cat. # AM2981

Host Mouse Monoclonal IgG1

Size 100 µl

Background:

The Annexin family of calcium-binding proteins is composed of at least thirteen mammalian genes (Annexin A1-13). These proteins are characterized by a conserved core domain which binds to phospholipids in a Ca^{2+} -dependent manner and a unique amino terminal region which may confer binding specificity. The Annexin family has been implicated as regulators of such diverse processes as ion-flux, endocytosis and exocytosis, and cellular adhesion. Annexin A2 (calpactin I, chromobindin 8, p36, Lipocortin II, PAP-IV, or Protein I) is a cytoskeletal calcium-dependent phospholipid binding protein, which has been shown to be a mediator of cortocosteroid activity, a substrate for serine/threonine kinases and growth regulated tyrosine kinases, and may play a role in secretion. Annexin A6 reverses transformation of A431 cells after overexpression, and this effect may involve annexin A6 targeting of p120 RasGAP to the plasma membrane to inactivate Ras.

References

- Zokas, L. & Glenney, J.R. (1987) *J Cell Biol.* 105:2111.
 Feinberg, J.M. et al. (1991) *J Histochem. & Cytochem.* 39:955.
 Grewal, T. & Enrich, C. (2006) *Bioessays* 28(12):1211.

Immunogen:

Clone (M298) was generated from a recombinant sequence that included amino acids in the C-terminal region of rat Annexin A2.

Applications:

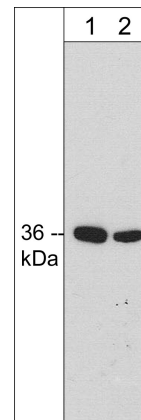
WB	1:1000
ELISA	1:2000
IP	1:50

End user should determine optimal dilution for their particular applications and experiments. Western blot membranes were incubated with diluted antibody in 5% non-fat milk, PBS, 0.04% Tween20 for 1 hour at room temperature.

Related Products:

- AM3301 Annexin A6 Mouse Monoclonal
 AK6060 Actin & Tubulin Antibody Sampler Kit
 AP1671 Actin (Tyr-53), phospho-specific Rabbit Polyclonal
 CM2811 Caveolin-1 Mouse Monoclonal
 CM2831 Caveolin-1 (Tyr-14), phospho-specific Mouse Monoclonal
 PP1491 PLC γ 1 (Tyr-775), phospho-specific Rabbit Polyclonal

FOR RESEARCH USE ONLY. NOT FOR DIAGNOSTIC OR THERAPEUTIC USE.



Western blot of rat PC12 cell lysate. The blot was probed with mouse monoclonal anti-Annexin A2 antibody at 1:250 (lane 1) or 1:1000 (lane 2).

Buffer and Storage:

Mouse monoclonal, protein A purified antibody is supplied in 100µl phosphate-buffered saline, 50% glycerol, 1 mg/ml BSA, and 0.05% sodium azide. Store at -20°C. Do not aliquot. Stable for 1 year.

Specificity:

This antibody detects a 36 kDa* protein corresponding to the molecular mass of Annexin A2 on SDS-PAGE immunoblots of rat PC12 cells.

*All molecular weights (MW) are confirmed by comparison to Bio-Rad Rainbow Markers and to western blot mobilities of known proteins with similar MW.

web: www.ecmbiosciences.com

telephone: 859-879-2075

email: info@ecmbiosciences.com

toll-free: 1-800-859-8202