

β -Adaptin (N-terminal region)

Cat. # AM2951

Host Mouse Monoclonal IgG1

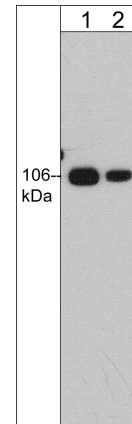
Size 100 μ l

Background:

Adaptins are essential for the formation of adaptor complexes of clathrin-coded vesicles. Adaptins interact with the cytoplasmic domains of membrane-spanning receptors in the course of their endocytic/exocytic transport. They represent 1 of at least 4 components of intracellular transport and receptor downregulation pathways, the others being $\alpha/\beta/\gamma$ -adaptins, receptors, and ligand molecules. β -adaptins have a bipartite structure with invariant N-terminal and variable C-terminal domains. The former interact with the uniform component of coded vesicles, the clathrin lattice. In contrast, the C-terminal domain provides a set of recognition sequences for other proteins and therefore functions as part of a selector domain responsible for the specific entrapment of membrane-bound proteins in vesicles.

References

Boehm M. & Bonifacino J.S. (2002) Gene. 286(2):175.



Western blot of human Jurkat cell lysate. The blot was probed with mouse monoclonal anti- β -Adaptin (N-terminal region) antibody at 1:500 (lane 1) and 1:2000 (lane 2).

Immunogen:

Clone (M295) was generated from a sequence corresponding to amino acids near the N-terminal region of the human β 1 subunit of the adaptor related protein complex 1. This sequence has high homology to rat and mouse β 1-Adaptin.

Applications:

WB 1:1000

ELISA 1:2000

End user should determine optimal dilution for their particular applications and experiments. Western blot membranes were incubated with diluted antibody in 5% non-fat milk, PBS, 0.04% Tween20 for 1 hour at room temperature.

Related Products:

VP2481 Vav (a.a. 165-174) [Conserved site] Rabbit Polyclonal
VP2561 Vav2 (Tyr-142), phospho-specific [Conserved site] Rabbit Polyclonal
VP2641 Vav2 (Tyr-172), phospho-specific [Conserved site] Rabbit Polyclonal
MS3001 Donkey Anti-Mouse Ig:HRP
CM2811 Caveolin-1 Mouse Monoclonal
CM2831 Caveolin-1 (Tyr-14), phospho-specific Mouse Monoclonal

FOR RESEARCH USE ONLY. NOT FOR DIAGNOSTIC OR THERAPEUTIC USE.

Buffer and Storage:

Mouse monoclonal, protein G purified antibody is supplied in 100 μ l phosphate-buffered saline, 50% glycerol, 1 mg/ml BSA, and 0.05% sodium azide. Store at -20°C. Do not aliquot. Stable for 1 year.

Specificity:

This antibody detects a 106 kDa* protein corresponding to the molecular mass of β -Adaptin on SDS-PAGE immunoblots of human Jurkat cells.

*All molecular weights (MW) are confirmed by comparison to Bio-Rad Rainbow Markers and to western blot mobilities of known proteins with similar MW.

www.ecmbiosciences.com
telephone: 859-879-2075
toll-free: 1-800-859-8202
email: info@ecmbiosciences.com

ECMBiosciences

Rev 2/22/2009