

# c-Abl (C-terminal Region)

Cat. # AM2091

Host Mouse Monoclonal IgG1

Size 100 µl

## Background:

The c-Abl proto-oncogene encodes a nonreceptor type protein tyrosine kinase that is widely expressed and is distributed in both the nucleus and the cytoplasm of cells. It has been implicated in regulation of cell proliferation, differentiation, apoptosis, cell adhesion, and stress response. A variety of stimuli activate c-Abl kinase including integrin activation, PDGF stimulation, and binding to proteins, such as c-Jun. Tyrosine phosphorylation is important for the regulation of c-Abl kinase activity. Tyrosine 245 is located in the linker region between the SH2 and catalytic domains. Phosphorylation of Tyr-245 is involved in activation of c-Abl kinase activity. Tyrosine 412 is located in the kinase activation loop of c-Abl, and phosphorylation of this residue is required for kinase activity. Thus, phosphorylation of Tyr-245 and Tyr-412 may be critical for activation of c-Abl in a variety of cell signaling pathways.

## References

- Brasher, B.B. et al. (2000) J. Biol. Chem. 275:35631.  
Pluk, H. et al. (2002) Cell 108:247.  
Van Etten, R.A. et al. (1999) Trends Cell. Biol. 9:179.

## Immunogen:

Clone (M209) was generated from a recombinant protein corresponding to the C-terminal region of human c-Abl.

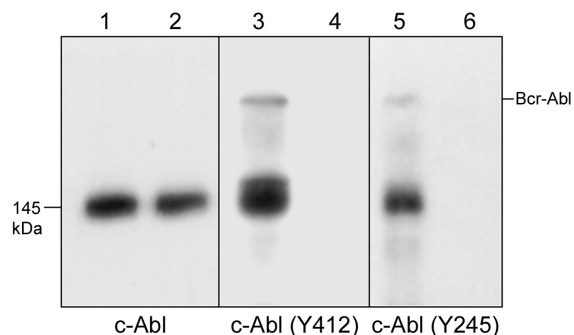
## Applications:

WB 1:1000  
ELISA 1:2000

End user should determine optimal dilution for their particular applications and experiments. Western blot membranes were incubated with diluted antibody in 5% non-fat milk, PBS, 0.04% Tween20 for 1 hour at room temperature.

## Related Products:

- AP1251 c-Abl (Tyr-245), phospho-specific Rabbit Polyclonal  
AP1271 c-Abl (Tyr-412), phospho-specific Rabbit Polyclonal  
FM2381 Fyn (N-terminal region) Mouse Monoclonal  
KL8201 K-562 Pervanadate Ctrl Lysate  
KL8301 K-562 + Pervanadate Lysate



Western blot analysis of K-562 cells treated with pervanadate (1 mM) for 30 minutes (lanes 1, 3, & 5). Some lanes were treated with alkaline phosphatase to remove phosphorylation on c-Abl (lanes 2, 4, & 6), then the blots were probed with anti-c-Abl (lanes 1 & 2), anti-c-Abl (Tyr-412) (AP1271; lanes 3 & 4), or anti-c-Abl (Tyr-245) (AP1251; lanes 5 & 6).

## Buffer and Storage:

Mouse monoclonal, protein G purified antibody is supplied in 100µl phosphate-buffered saline, 50% glycerol, 1 mg/ml BSA, and 0.05% sodium azide. Store at -20°C. Do not aliquot. Stable for 1 year.

## Specificity:

This antibody detects a 145 kDa\* protein corresponding to c-Abl on SDS-PAGE immunoblots of human K-562 and HL-60 cells, and mouse ANN-1 cells.

\*All molecular weights (MW) are confirmed by comparison to Bio-Rad Rainbow Markers and to western blot mobilities of known proteins with similar MW.

FOR RESEARCH USE ONLY. NOT FOR DIAGNOSTIC OR THERAPEUTIC USE.

www.ecmbiosciences.com  
telephone: 859-879-2075  
toll-free: 1-800-859-8202  
tech: info@ecmbiosciences.com

**ECM**Biosciences

Rev 4/14/2008