

c-Abl Phospho-Regulation Antibody Sampler Kit

Catalog # AK6210

Kit Summary:

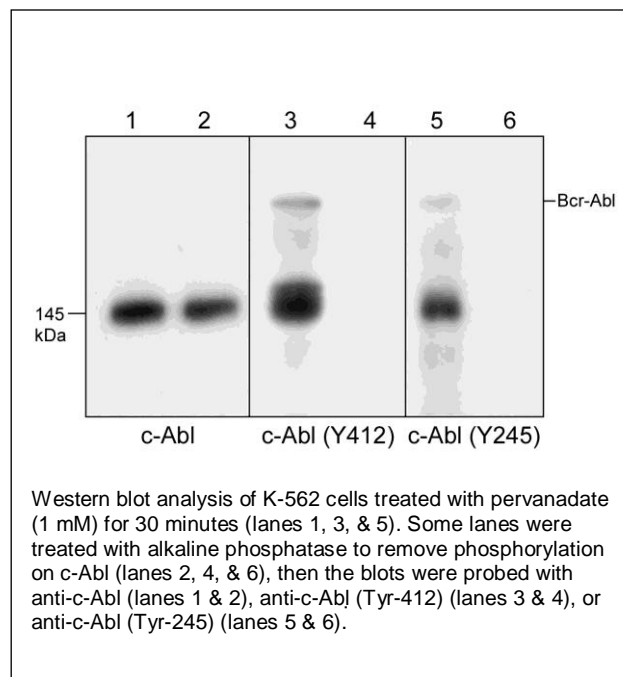
The c-Abl phospho-regulation antibody sampler kit can be used to detect c-Abl activation resulting from phosphorylation of Tyr-245 and Tyr-412. The kit also includes an antibody to examine total c-Abl expression levels and secondary reagents for rabbit polyclonal and mouse monoclonal antibody detection.

Background:

The c-Abl proto-oncogene encodes a nonreceptor type protein tyrosine kinase that is widely expressed and is distributed in both the nucleus and the cytoplasm of cells. It has been implicated in regulation of cell proliferation, differentiation, apoptosis, cell adhesion, and stress response. A variety of stimuli activate c-Abl kinase including integrin activation, PDGF stimulation, and binding to proteins, such as c-Jun. Tyrosine phosphorylation is important for the regulation of c-Abl kinase activity. Tyrosine 245 is located in the linker region between the SH2 and catalytic domains. Phosphorylation of Tyr-245 is involved in activation of c-Abl kinase activity. Tyrosine 412 is located in the kinase activation loop of c-Abl, and phosphorylation of this residue is required for kinase activity. Thus, phosphorylation of Tyr-245 and Tyr-412 may be critical for activation of c-Abl in a variety of cell signaling pathways.

References:

Brasher, B.B. et al. (2000) J. Biol. Chem. 275:35631.
Pluk, H. et al. (2002) Cell 108:247.
Van Etten, R.A. et al. (1999) Trends Cell. Biol. 9:179.



Kit Components:

Catalog#	Description	Type	Size	Applications	Species Reactivity	MW (kDa)
AP1271	c-Abl (Tyr-412), phospho-specific	Rabbit pAb	50 µl	WB, E	H, R, M	145
AP1251	c-Abl (Tyr-245), phospho-specific	Rabbit pAb	50 µl	WB, E	H, R, M	145
AM2091	c-Abl (C-terminal region)	Mouse mAb	50 µl	WB, E	H, R, M	145
MS3001	Anti-Mouse Ig:HRP	Donkey pAb	100 µl	WB, E		
RS3251	Anti-Rabbit Ig Light-Chain Specific:HRP	Mouse mAb	100 µl	WB, E		

Applications: WB = Western blot, E = ELISA

Species: H = Human, R = Rat, M = Mouse.

Buffers and Storage:

Rabbit polyclonal and mouse monoclonal affinity-purified antibodies are supplied in phosphate-buffered saline, 50% glycerol, 1 mg/ml BSA, and 0.05% sodium azide. Store at -20°C. Stable for 1 year.

Secondary reagents are supplied in phosphate-buffered saline, 50% glycerol, and 1 mg/ml BSA. Store at -20°C. Stable for 1 year.

FOR RESEARCH USE ONLY. NOT FOR DIAGNOSTIC OR THERAPEUTIC USE.

www.ecmbiosciences.com

telephone: 859-879-2075

toll-free: 1-800-859-8202

info@ecmbiosciences.com

ECMBiosciences

Rev 08/09